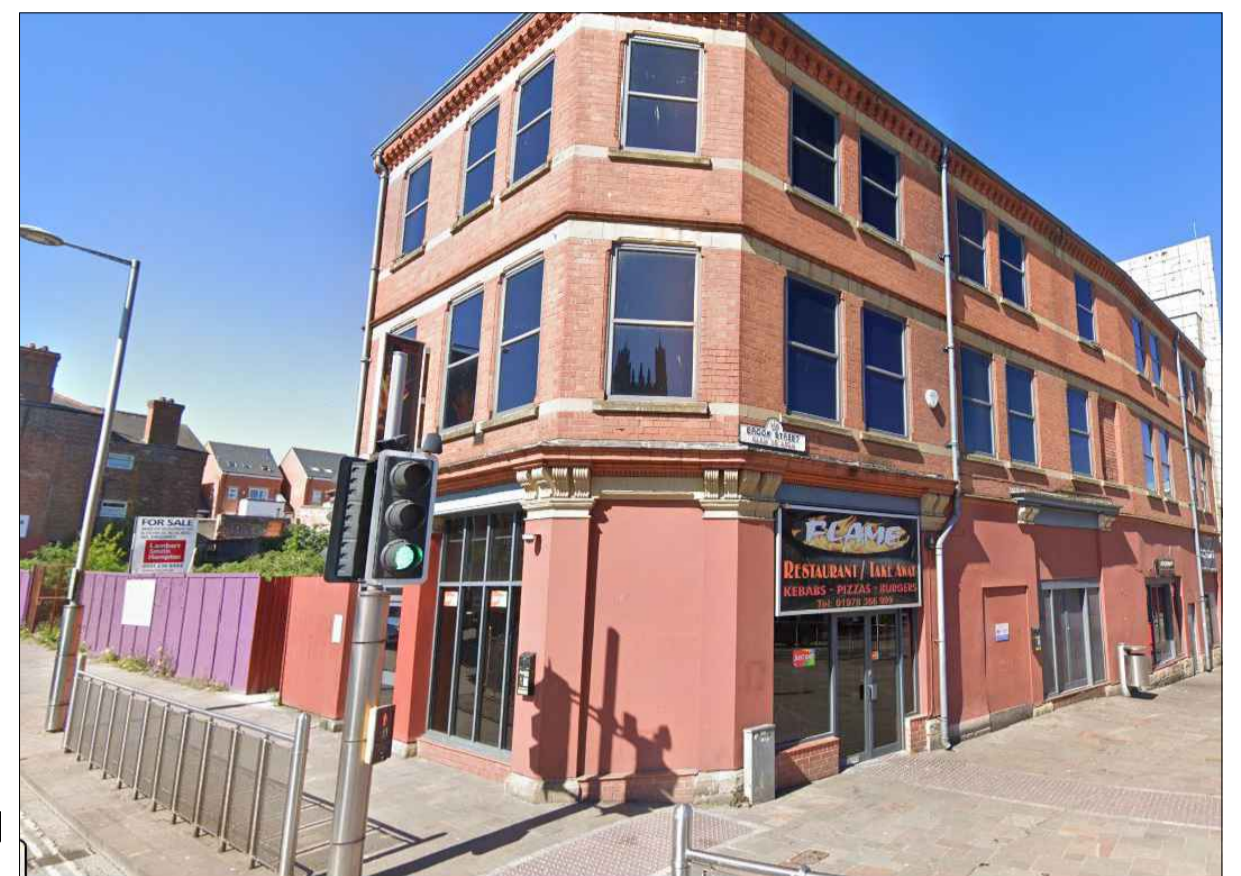


Health & Safety Notes

1. Contractor must ensure that all work on site is carried out in a safe & satisfactory manner, in accordance with Health & Safety Act 1974, COSHH Regulations 2002 & requirements of C.D.M



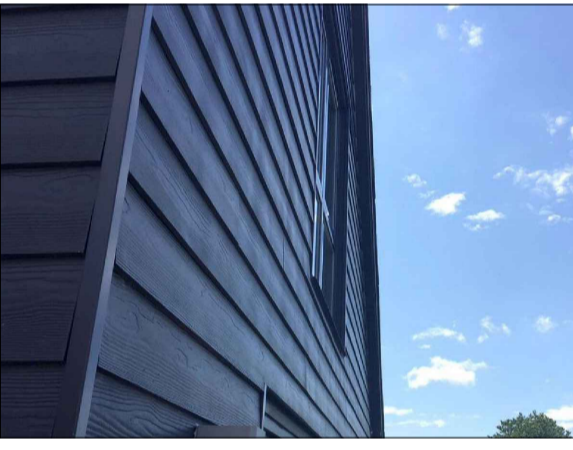
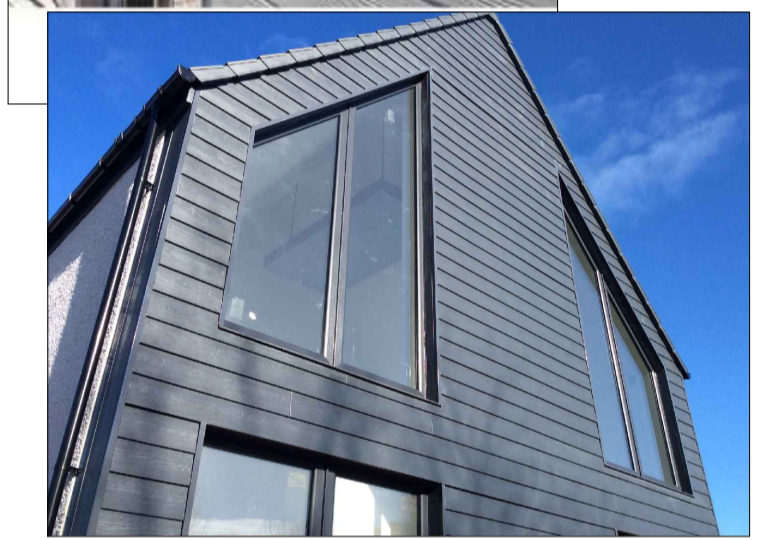
Existing Unit to Brooke Street



PROPOSED FRONT ELEVATION TO BRIDGE STREET. 1:100



Proposed Cedar Horizontal Cladding in greys by Marley or other approved.



Grey Block Options. (Fortcrete)



Pewter



Steel Grey



Face Finish



Stone Coloured Render Colour



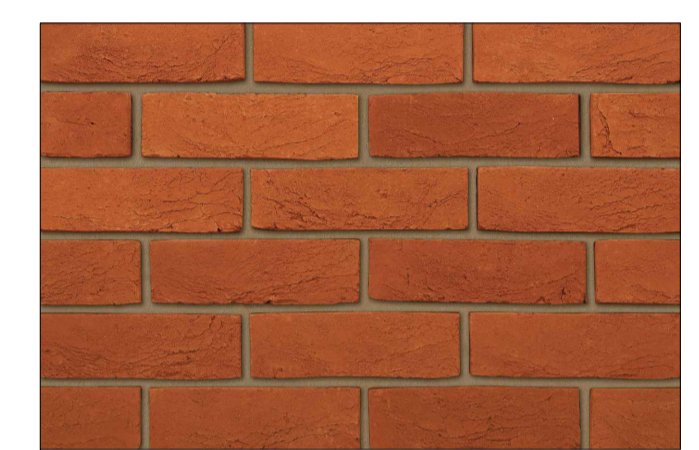
Typical Aluminum Capping Colour



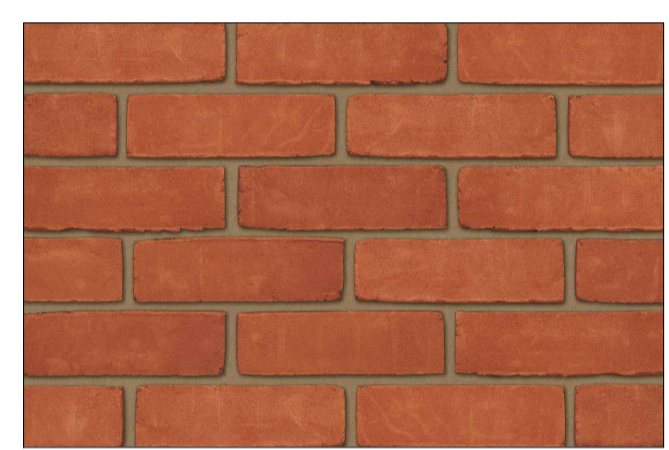
PVC Grey Colour Windows



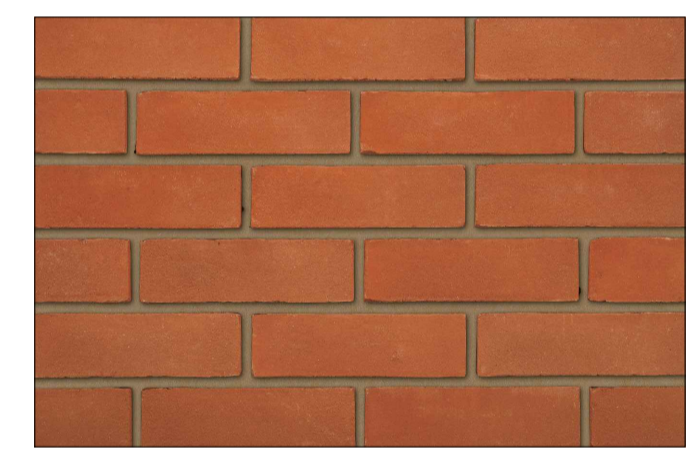
Glass Juliet Balcony



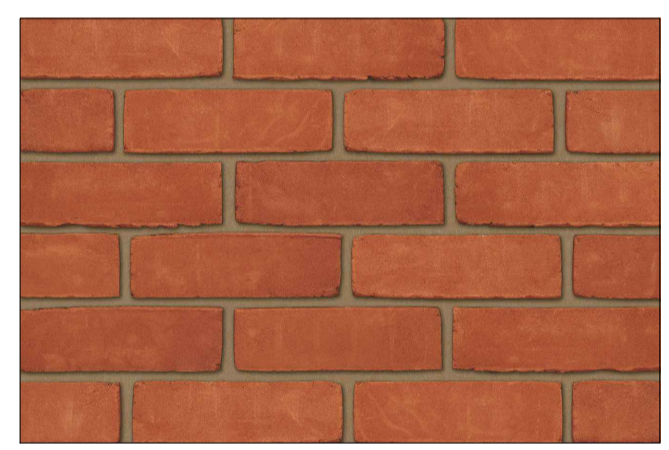
Kingstone Handmade Heather Red



Kingstone Handmade Light Red

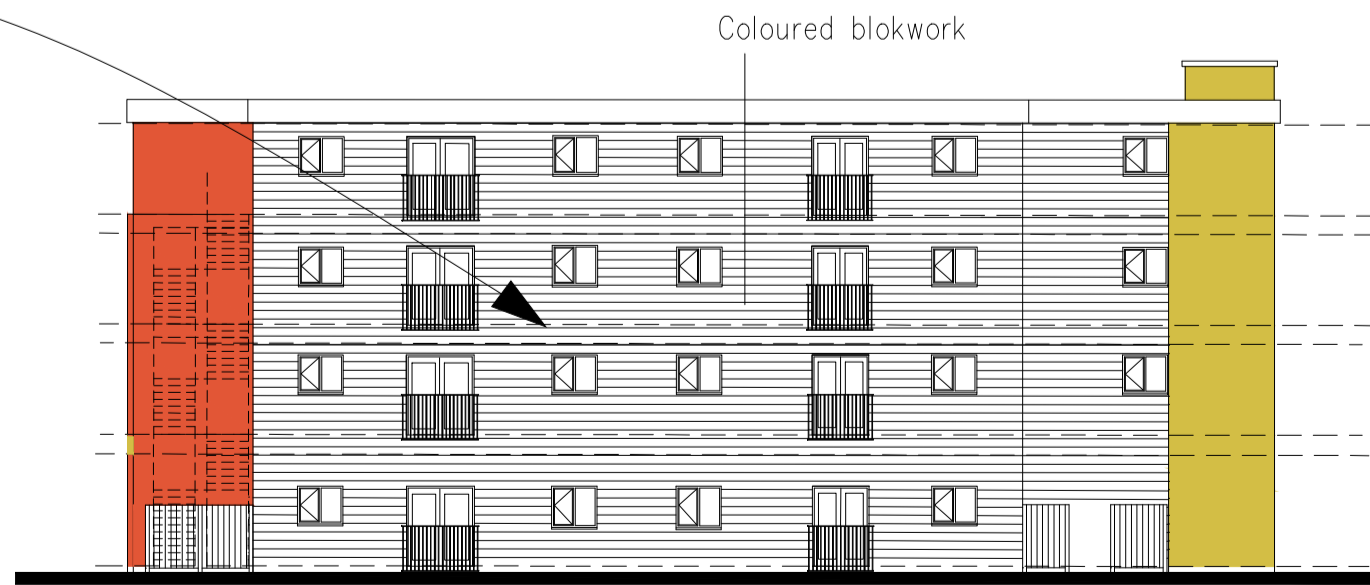


Leicester Orange Stock

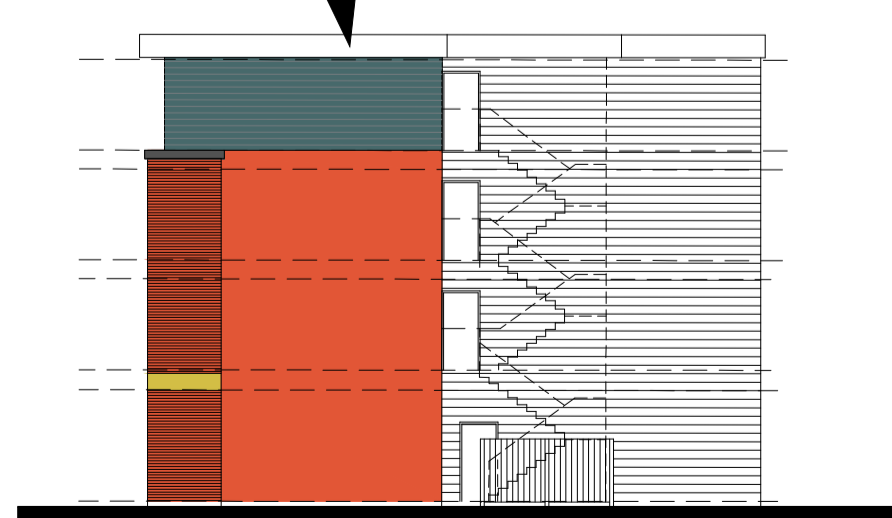


Leybrook Red Stock

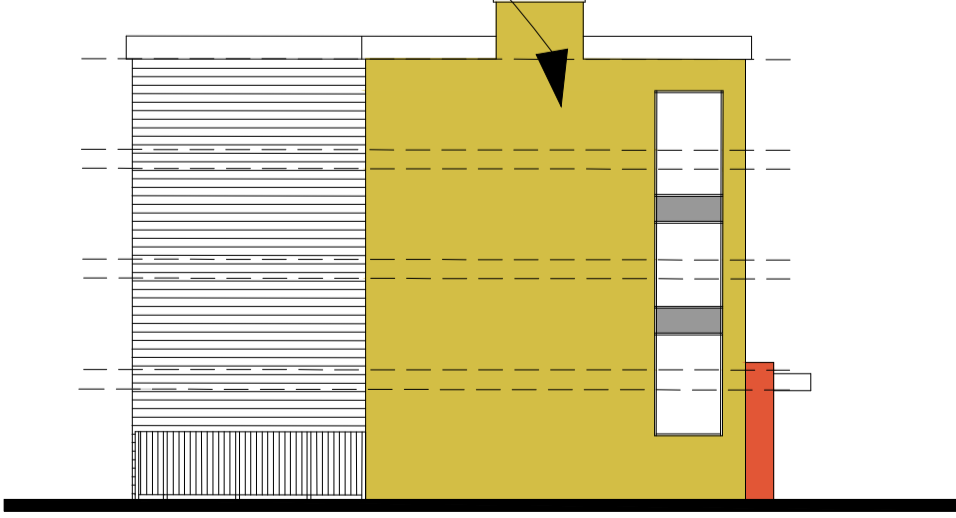
Red Brick Options. (Ibstock)



PROPOSED REAR ELEVATION. 1:200



PROPOSED SIDE ELEVATION. 1:200



PROPOSED SIDE ELEVATION. 1:200

Rev.	Description	Date
Client CB 2 Ltd		
Project Central Buildings/ Vacant land. Proposed Apartments		
Drawing Title Proposed External Finishes Bridge Street		
Drawn by	IW	Checked by
Status	Scale @ A1	Date
Job no.	11684	Rev.
Dwg no.	PL 05	Date
Cassidy+Ashton www.cassidyashton.co.uk Architecture + Building Surveying + Town Planning 7 East Cliff, Preston, Lancashire, PR1 3JE 01772 258 356 10 Hunters Walk, Canal Street, Chester, CH1 4EB 01244 402 900		