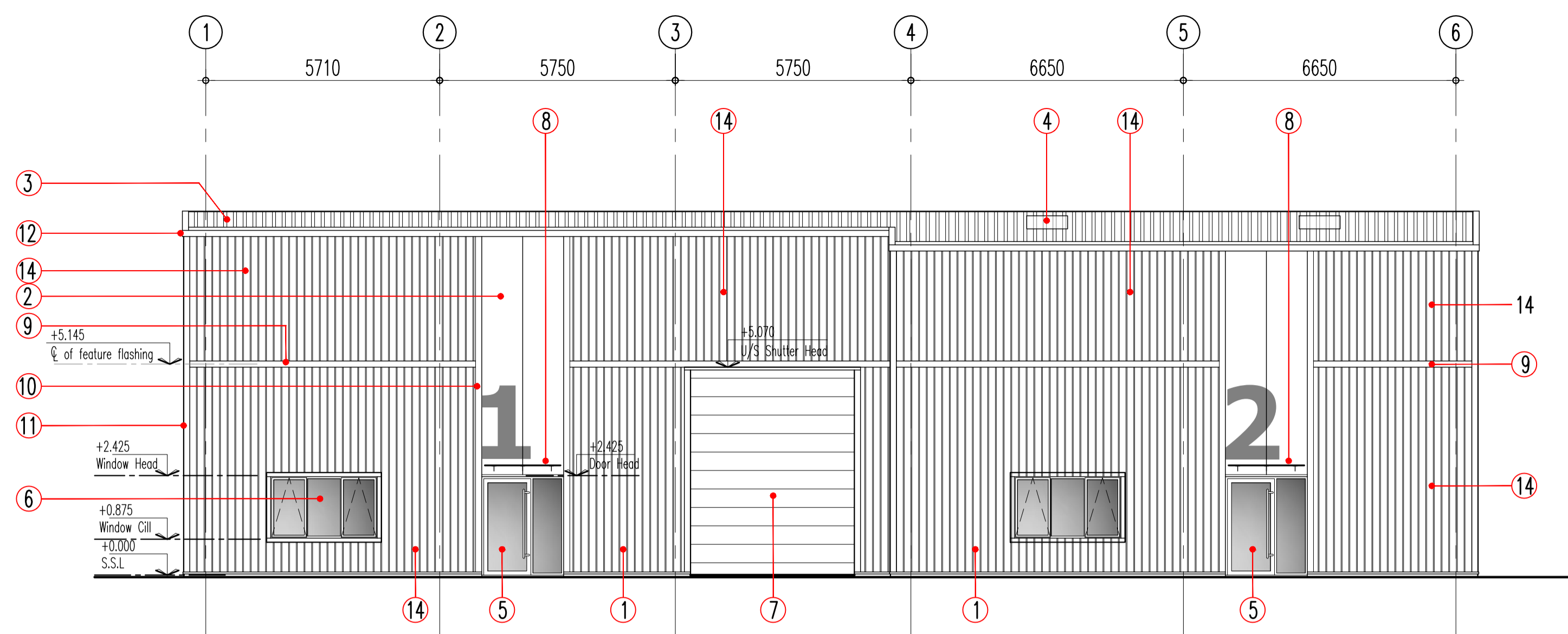


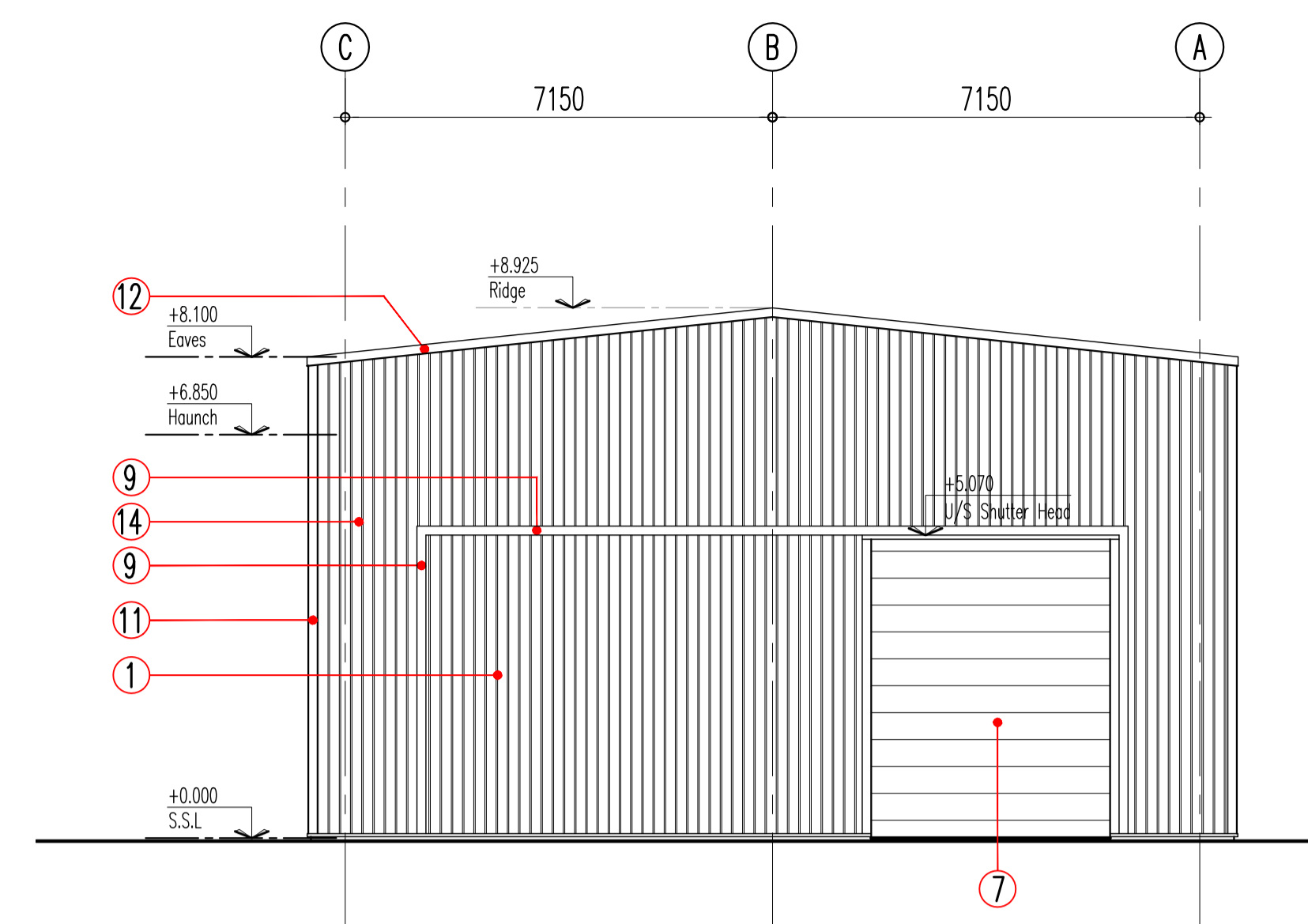
- ALL DIMENSIONS AND LEVELS ARE TO BE CHECKED ON SITE.
- ANY DISCREPANCIES ARE TO BE REPORTED TO CUBE ARCHITECTURE AND DESIGN BEFORE ANY WORK COMMENCES.
- THIS DRAWING SHALL NOT BE SCALED TO ASCERTAIN ANY DIMENSIONS. WORK TO FIGURED DIMS ONLY.
- THIS DRAWING SHALL NOT BE REPRODUCED WITHOUT EXPRESS WRITTEN PERMISSION FROM CUBE ARCHITECTURE AND DESIGN.
- TITLE OVERLAY DRAWINGS AND OWNERSHIP BOUNDARIES ARE PRODUCED USING ALL REASONABLE ENDEAVOURS. CUBE ARCHITECTURE AND DESIGN CANNOT BE RESPONSIBLE FOR THE ACCURACY OR SCALE. DISCREPANCY OF BASE PLANS SUPPLIED TO THEM.

**EXTERNAL MATERIALS SPECIFICATION**

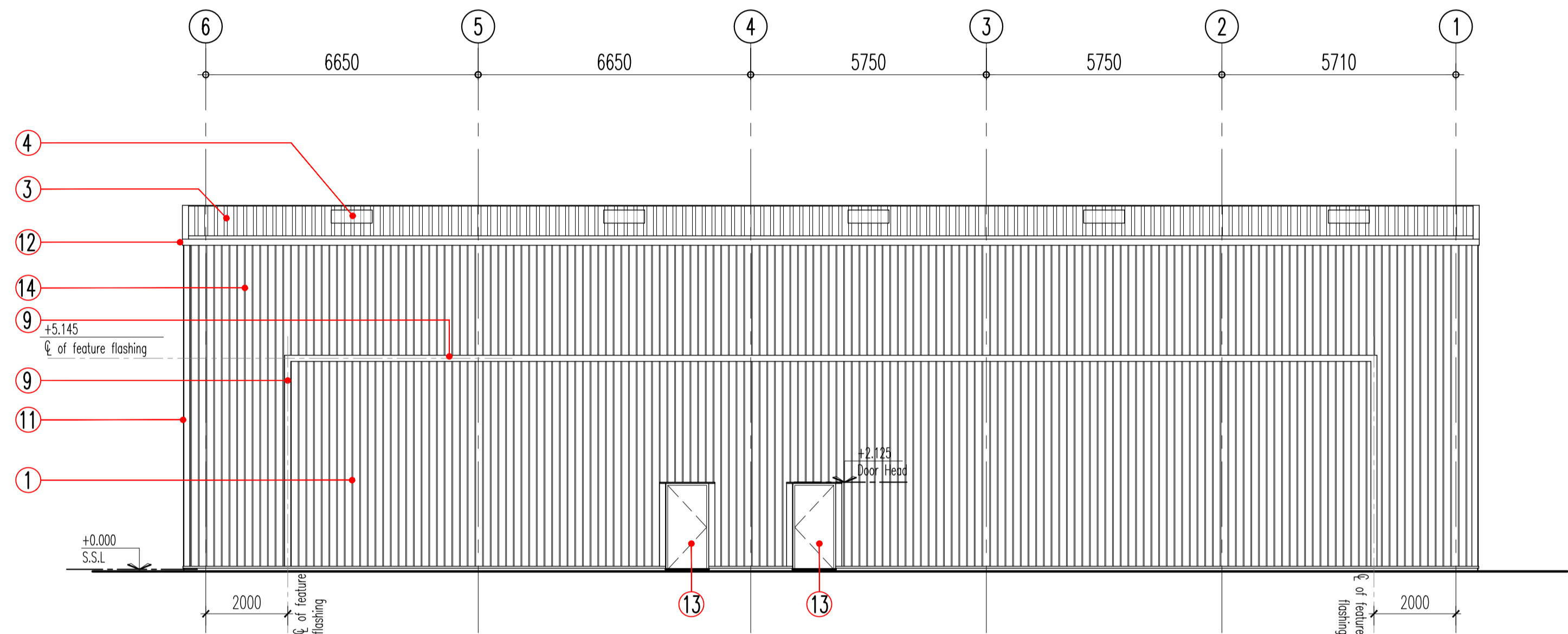
- 1 **EXTERNAL WALL:**  
202mm o/a Vertically laid built up cladding system comprising MW5C 0.5mm galvanized mild steel external profile sheeting with Colorcoat Prisma finish - colour: Sirius RAL 9006.
- 2 **EXTERNAL WALL:**  
80mm Vertically laid composite insulated cladding panels: Kingspan KS1000 MR architectural wall cladding. Finish and colour: Spectrum coated to Obsidian RAL 9007.
- 3 **BUILT UP ROOF CLADDING SYSTEM:**  
23.3mm o/a non-fragile assembly built up roof cladding system (Euro Clad 'Elite System 2' or similar approved) comprising 0.7mm thk 32/1000 profile galvanized mild steel external sheet HPS200 Ultra colour coated to Goosewing Grey RAL 7038.
- 4 **ROOFLIGHTS:**  
Site assembled non-fragile triple skin GRP rooflights to provide a maximum 15% area coverage.
- 5 **MAIN ENTRANCE DOOR:**  
Double glazed aluminium framed narrow style door and screen combination unit. All glass to be double glazed toughened glass panels. Door leaf to provide a min' clear opening width of 1000mm. Door & frame finish colour to be Basalt Grey RAL 7012.
- 6 **WINDOWS:**  
Aluminium framed thermally broken double glazed casement window system. Frame finish colour to be Basalt Grey RAL 7012.
- 7 **SECTIONAL DOOR:**  
Insulated sectional overhead door. Sectional door colour to be Basalt Grey RAL 7012. All flashings colours and finish to match adjacent cladding.
- 8 **ENTRANCE CANOPY:**  
Glazed entrance canopy, 6.8mm toughened safety glass with glazing bars on spacers on tapered steel structural 'T' sections, fixed to stub with slotted holes. Stub fixed to steel support beam via thermal break connections to S.E details. Support Steel Finish Colour: Basalt Grey RAL 7012
- 9 **FEATURE VERTICAL/HORIZONTAL TRIM:**  
150x30x2mm thk projecting aluminium feature trim stitched and sealed to support flashing with continuous butyl seal. HPS200 Ultra colour coated to White RAL 9003.
- 10 **FEATURE VERTICAL JAMB FLASHING:**  
Stepped (projecting 30mm) 150mm wide aluminium feature jamb flashing. Finish and colour: Spectrum coated to Obsidian RAL 9007.
- 11 **FEATURE CORNER FLASHING:**  
Stepped (projecting 30mm) 150mm wide aluminium feature Corner flashing. Finish and colour: Spectrum coated to Orion RAL 9007.
- 12 **VERGE/PARAPET FLASHING:**  
Colour coated verge flashing. Finish and colour: Colorcoat Prisma to Orion RAL 9007.
- 13 **STEEL EXTERNAL DOOR:**  
External steel flush faced security door with insulated core and frames. Ironmongery to include panic escape hardware to inner face. Frame and door finish colour to be Basalt Grey RAL 7012. All flashings to match adjacent cladding colour and finish.
- 14 **EXTERNAL WALL:**  
202mm o/a Vertically laid built up cladding system comprising MW5C 0.5mm galvanized mild steel external profile sheeting with Colorcoat Prisma finish - colour: Orion RAL 9007.



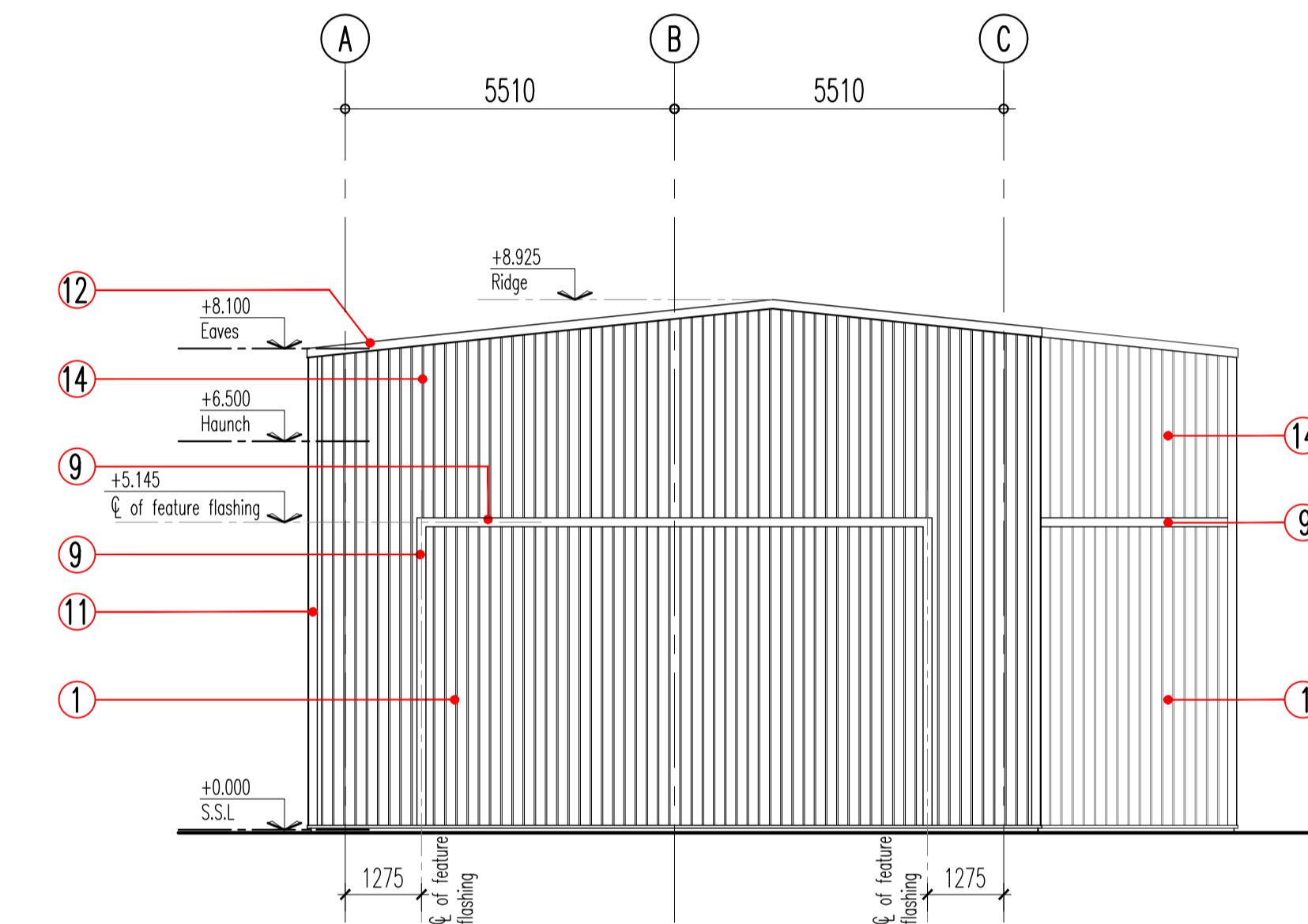
PROPOSED FRONT ELEVATION  
1:100@A1



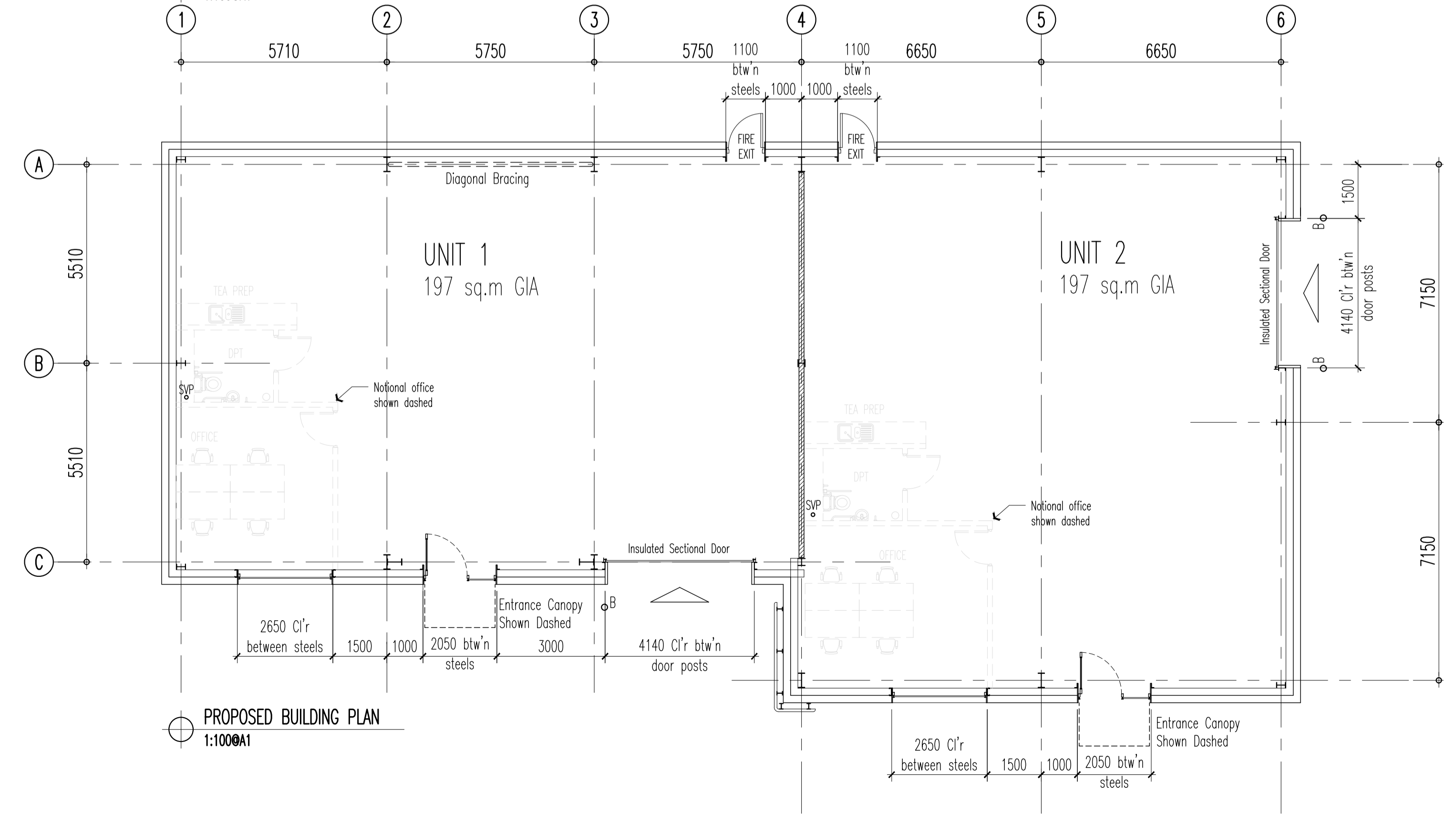
PROPOSED GABLE ELEVATION  
1:100@A1



PROPOSED REAR ELEVATION  
1:100@A1



PROPOSED GABLE ELEVATION  
1:100@A1



PROPOSED BUILDING PLAN  
1:100@A1

Rev	Description	Date	By
Status: PLANNING			
Client: THE HOLLINS MURRAY GROUP			
Contract: PROPOSED INDUSTRIAL DEVELOPMENT ABER ROAD FLINT			
Drawing: PROPOSED BUILDING A G.A. PLANS AND ELEVATIONS			
Drawing No: AS786-04	Revision: -	Scales: 1:100@A1	
Drawn: DMR	Checked:	Date: MAY 23	