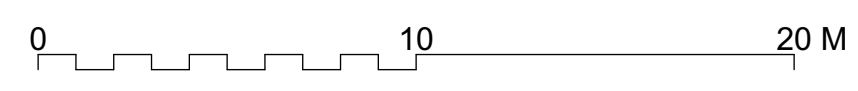
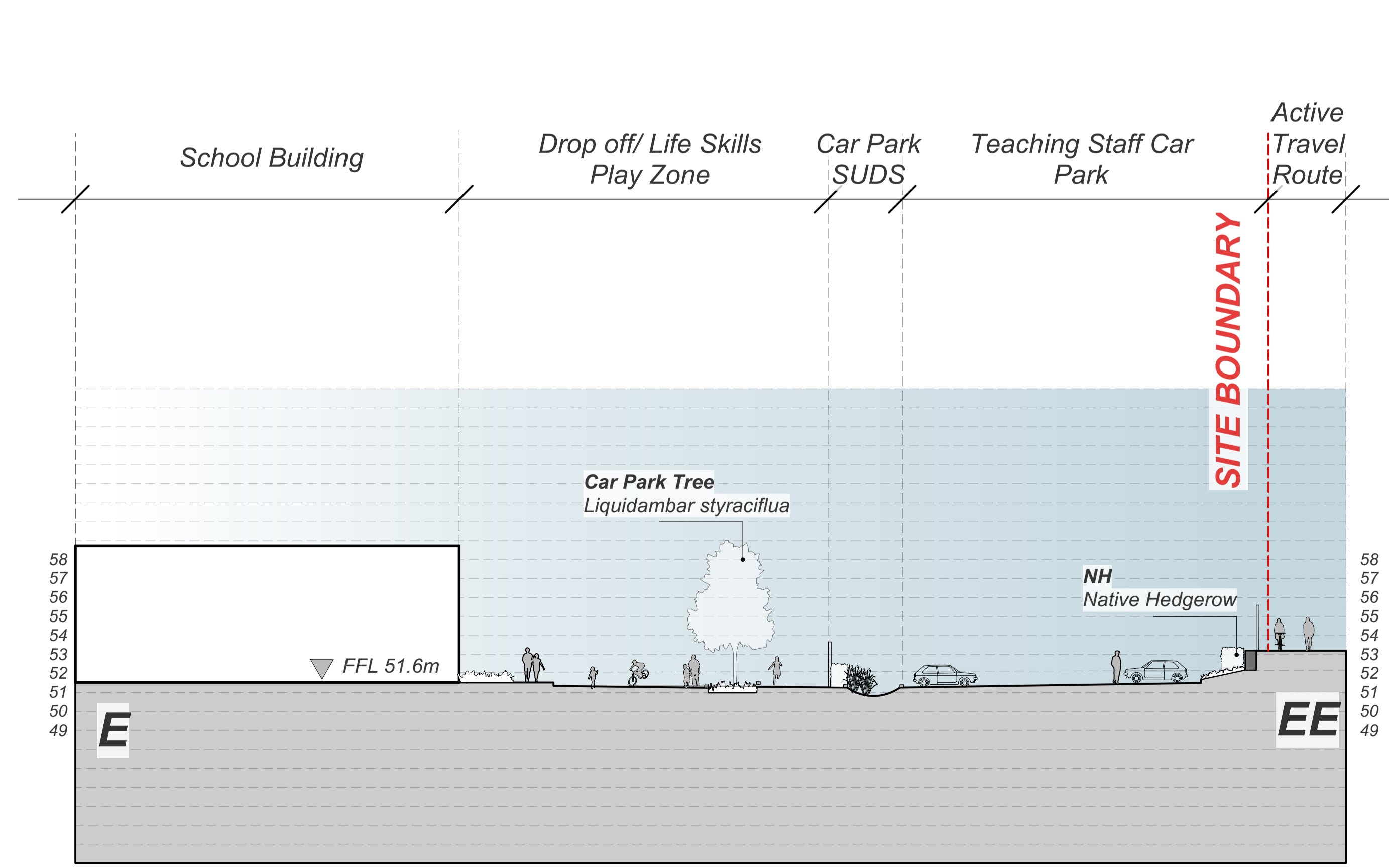
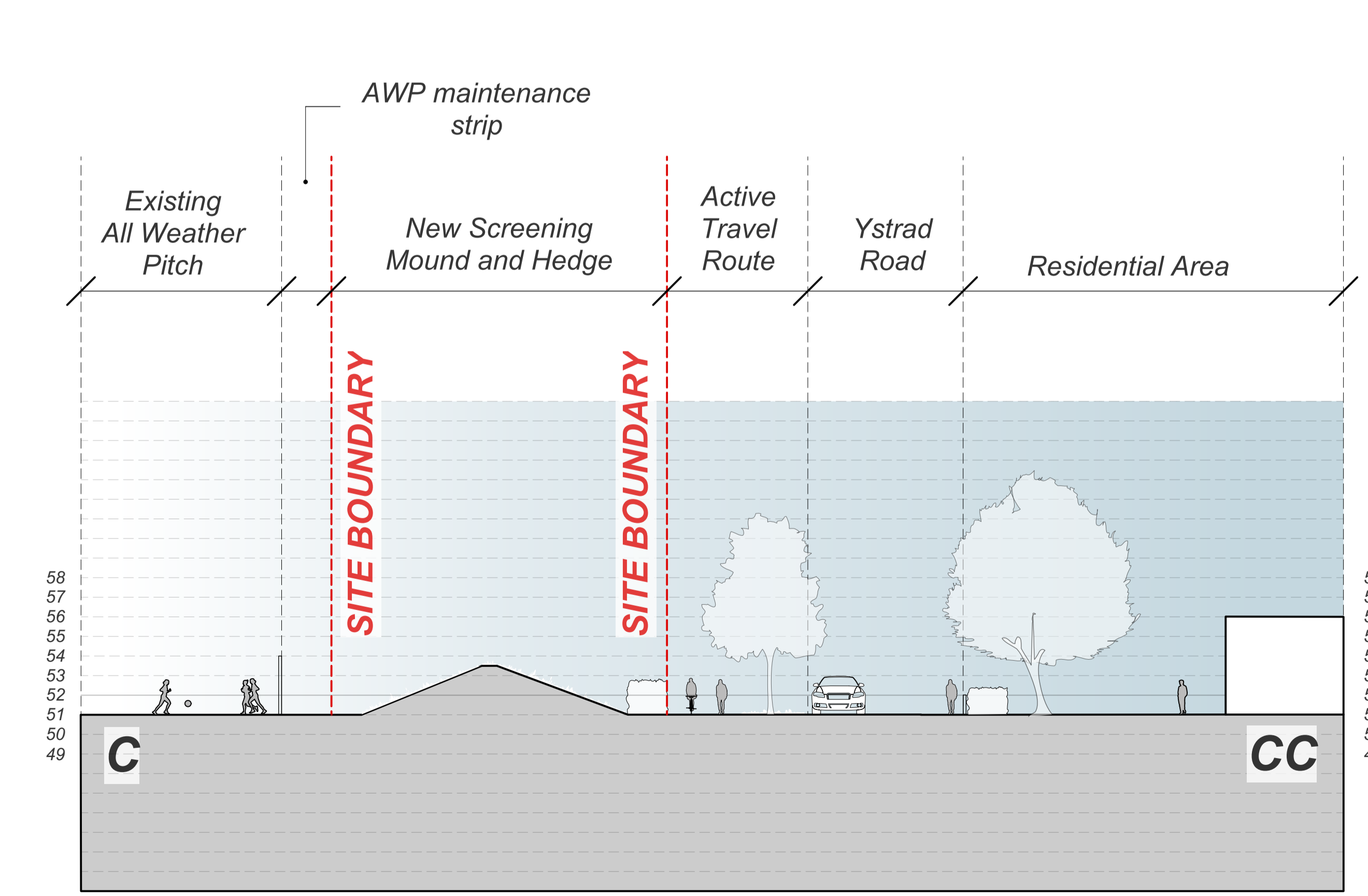
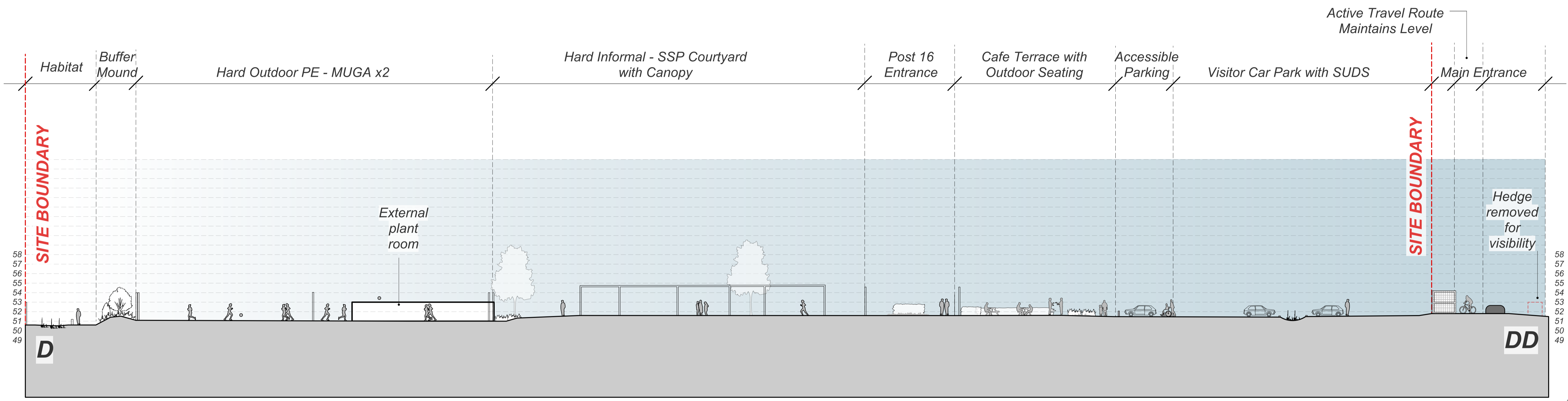
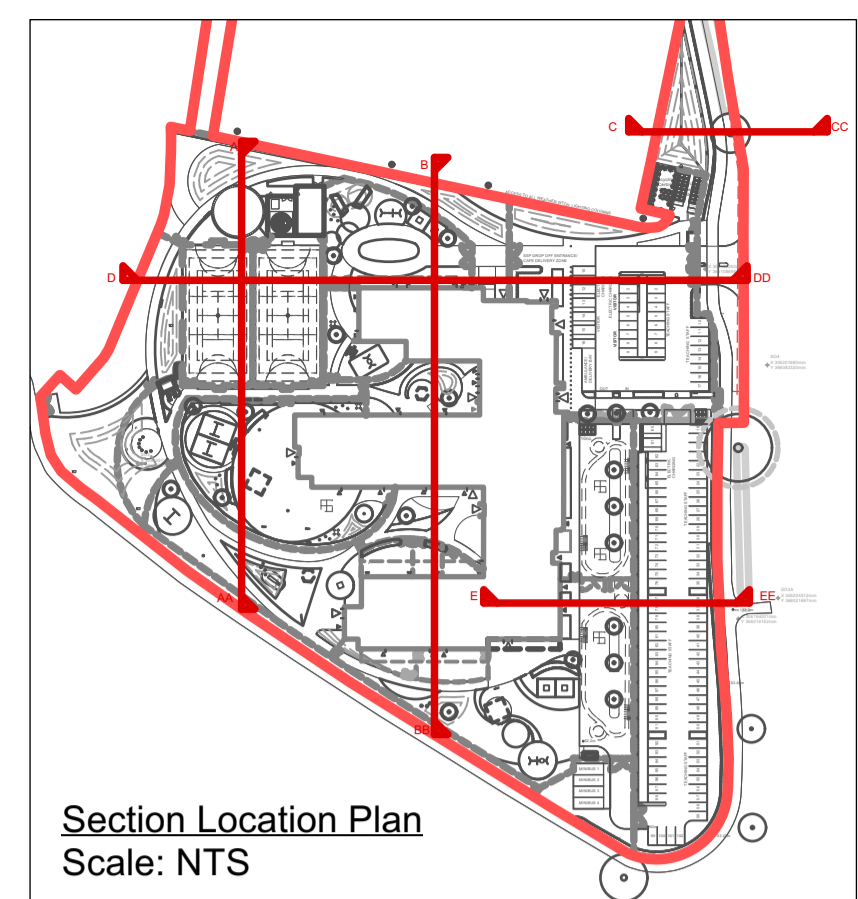


NOTE

1. Do not scale from this drawing.
2. All dimensions are in meters unless otherwise noted.
3. Information shown outside extent of works is for illustrative purposes only.
4. To be read in conjunction with all other Landscape Architect's drawings Drawings YPB-ALA-XX-XX-DR-L-00000 Series, Details YPB-ALA-XX-XX-DR-L-10000 Series, NBS - YPB-ALA-XX-XX-SPL-00000, MMP - YPB-ALA-XX-XX-RP-L-00001
5. To be read in conjunction with all other disciplines drawings and specifications.
6. Specification and details of build ups to paving, kerbs, edges and structures to be advised by Project Civil Engineer.
7. All subbases to retaining features, walls to Project Engineers details.
8. Formations levels are to be inspected and approved by the Project Engineer.
9. Highway works by others, cross over and carpark please refer to Civils package.
10. Drainage design, manhole cover positions & final levels to be coordinated with Drainage Engineers
11. Lighting design to be coordinated with MSE details, columns are shown for coordination only.
12. Landscape contractor is responsible for all area take offs. Any areas or quantities shown are for information only. Plant numbers should account for slopes/gradients.
13. Plant substitutions require approval from Landscape Architect / Client due to safeguarding and health and safety issues in relation to SEND client requirements.
14. Any work to existing trees to be carried out by a suitably qualified Tree Surgeon. All work to be carried out in accordance with NMS. Tree Consultant to advise on all issues regarding works in relation to trees.
15. The following elements are intended to be specialist design packages, subcontractor / specialist to submit drawings for approval prior to procurement and manufacture: a. street furniture b. canopies c. cycle stores, d. metalwork package fencing, e. gates etc. Access control to be coordinated with MSE Consultant tbc by School & DCC, sports furniture and finishes.
16. The following elements are intended to be specialist design packages, subcontractor / specialist designer to submit drawings for approval prior to procurement and manufacture: a. all street furniture b. external classroom canopies c. cycle store d. metalwork package including all fencing, handrails, gates etc. Access control / Gate suiting to be coordinated with WCL/ MSE Consultant tbc by School & DCC, sports furniture / finishes / items/markings. All specialists to submit drawings for approval prior to procurement and manufacture and ensure these are designed in accordance with all relevant BS Standards and Guidance.
17. The contractor is to check all setting out information, levels and dimensions before construction. Any discrepancies are to be brought to the attention of Ares Landscape Architects before commencing on site.
18. Refer to designer risk assessment for details in relation to safeguarding / security issues due to SEND client requirements.
19. Site clearing works as per Ecological and Arboricultural reports.
20. Topsoil / Subsoil stripping to be carried out in accordance with Arboricultural Input for site strip, storage, remediation and repositioning on site. To be carried out in accordance with the Waters Soft Work Manual.
21. Provide small gaps of at least 15cm x 15cm at designated points under all boundary fences to allow movement of small mammals/hedgehogs. These are indicatively shown on the sustainability and biodiversity plans YPB-ALA-XX-XX-DR-L-00029 in 11 No. locations.
22. Incoming services, meter, substations to MEP information. Please refer to their package for detailed layouts.
23. Drainage design by Drainage Engineer, please refer to Curtins information.



ID	RISK	MITIGATION	DATE MITIGATED
RESIDUAL PROJECT RISKS			

DATE	REV	DESCRIPTION OF REVISION	DRAWN BY	APPROVED BY
30/08/2022	P06	Issued for Planning	KP	KS
08/07/2022	P05	Issued for Draft CPs	KP	KS
20/05/2022	P04	Issued for planning	KP	KS

REVISIONS

STATUS
S2 - FOR PLANNING

ares
LANDSCAPE ARCHITECTS

Ares Landscape Architects LTD
Gatecrasher,
51 Eyre Lane
Sheffield
S1 4RB
t: 0114 276 2000
e: hello@aresdesign.co.uk
w: ares.eu.com

CLIENT:
Wates Construction Ltd

PROJECT TITLE:
Ysgol Plas Brondyffryn SEN

DRAWING TITLE:
Site Sections 2 of 2

DRAWING SCALE: 1:200	DRAWN BY: KP	DRAWN DATE: 18/02/2022
PAPER SIZE: A1	APPROVED BY: KS	ALA PROJECT CODE: ALAT25

DRAWING NUMBER: **YPB-ALA-00-XX-DR-L-00011** STATUS: **S2** REVISION: **P06**