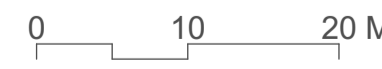
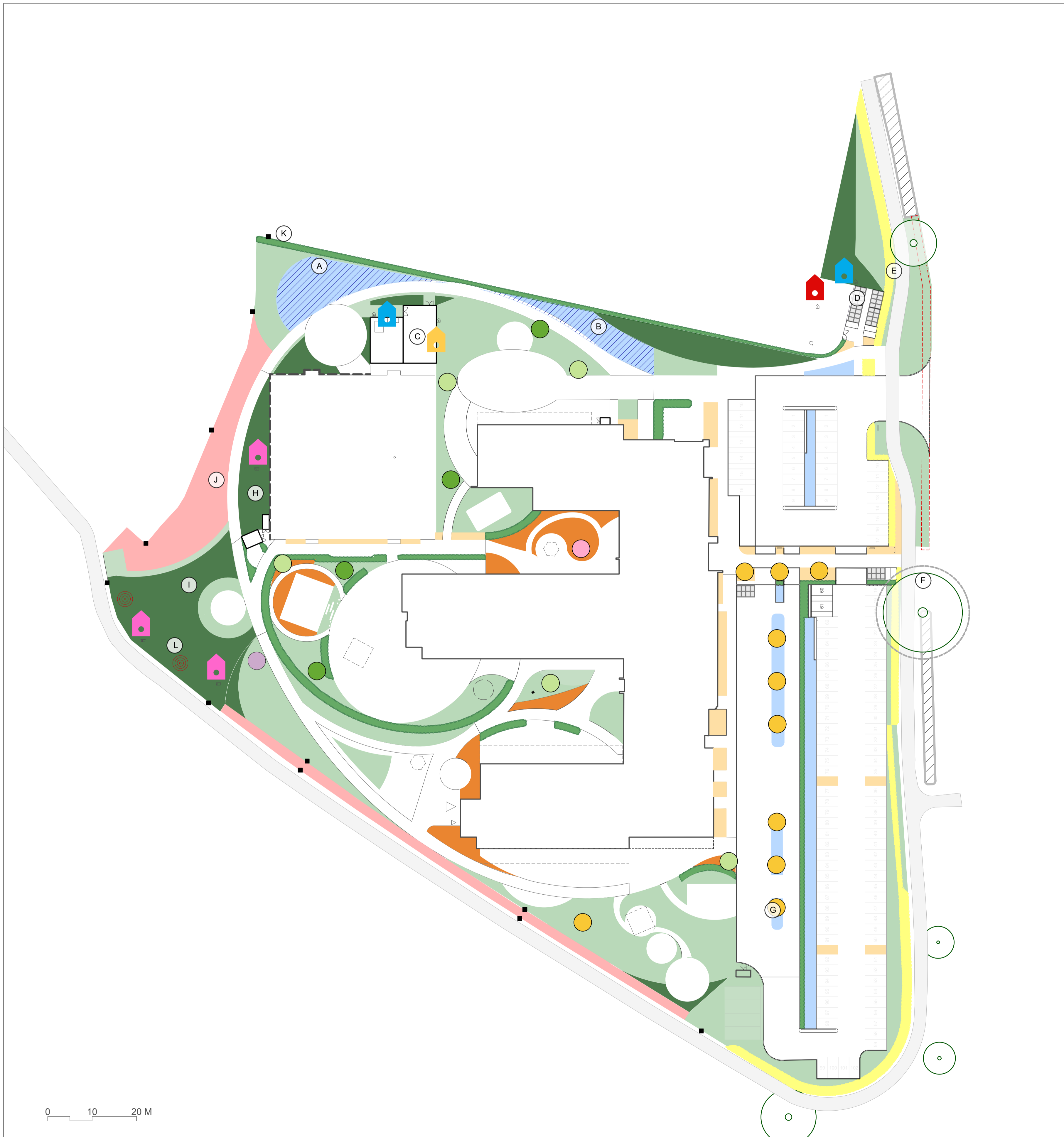


**NOTE**

- Do not scale from this drawing.
- All dimensions are in meters unless otherwise noted.
- Information shown outside extent of works is for illustrative purposes only.
- To be read in conjunction with all other Landscape Architects drawings. Drawings YPB-ALA-XX-XX-DR-L-00000 Series, Details YPB-ALA-XX-XX-DR-L-10000 Series, NBS - YPB-ALA-XX-XX-SP-L-00002 MMP - YPB-ALA-XX-XX-RP-L-00001
- To be read in conjunction with all other disciplines drawings and specifications.
- Specification and details of built ups to paving, kerbs, edges and structures to be advised by Project Civil Engineer.
- All subbases to retaining features, walls to Project Engineers details.
- Formations levels are to be inspected and approved by the Project Engineer.
- Highway works by others, cross over and carpark please refer to Civils package.
- Drainage design, manhole cover positions & final levels to be coordinated with Drainage Engineers
- Lighting design, to be coordinated with M&E details, columns are shown for coordination only.
- Landscape contractor is responsible for all area take offs. Any areas or quantities shown are for information only. Plant numbers should account for slopes/gradients.
- Plant substitutions require approval from Landscape Architect / Client due to safeguarding and health and safety issues in relation to SEND client requirements.
- Any work to existing trees to be carried out by a suitably qualified Tree Surgeon; All work to be carried out in accordance with AMS. Tree Consultant to advise on all issues regarding works in relation to trees.
- The following elements are intended to be specialist design packages, subcontractor / specialist to submit drawings for approval prior to procurement and manufacture: a. street furniture b. canopies c. cycle stores d. metalwork package fencing, e. gates etc. Access control to be coordinated by M&E Consultant tbc by School. Sports furniture and finishes.
- The following elements are intended to be specialist design packages, subcontractor / specialist designer to submit drawings for approval prior to procurement and manufacture: a. all street furniture b. external classroom canopies c. cycle store d. metalwork package including all fencing, handrails, gates etc. Access control / Gate seating to be coordinated with VCL / M&E Consultant tbc by School & DCC, sports furniture / finishes / line markings. All specialists to submit drawings for approval prior to procurement and manufacture and ensure these are designed in accordance with all relevant BS Standards and Guidance.
- The contractor is to check all setting out information, levels and dimensions before construction. Any discrepancies are to be brought to the attention of Ares Landscape Architects before commencing on site.
- Refer to designer risk assessment for details in relation to safeguarding / security issues due to SEND client requirements.
- Site clearing works as per Ecological and Arboricultural reports.
- Topsoil / Subsoil stripping to be carried out in accordance with Arboricultural Input for site strip, storage, remediation and repositioning on site. To be carried out in accordance with the Wales Soft Work Manual.
- Provide small gaps of at least 15cm x 15cm at designated points under all boundary fences to allow movement of small mammals/hedgehogs. These are indicatively shown on the sustainability and biodiversity plans YPB-ALA-00-XX-DR-L-00029 in 11No. locations.
- Incoming services, meter, substations to MEP information. Please refer to their package for detailed layouts.
- Drainage design by Drainage Engineer, please refer to Curtins information.



**Sustainability and Biodiversity Targets**

- (A) Wetland habitat creation with planting that aids water management.
- (B) Sustainable urban drainage providing amenity for the school and wider community.
- (C) Integrated bird boxes located on the energy centre building and bin store.
- (D) Cycle parking links to local active travel route to promote walking and cycling.
- (E) Mixed native hedge to be planted in compensation for the hedgerow removed to allow site access.
- (F) Retaining boundary vegetation where possible.
- (G) Species of trees and planting selected to cope with future climate change.
- (H) Wind mitigation provided by landform and planting to create a sheltered learning environment.
- (I) Mixed broadleaf woodland with tree species selected for their local landscape character.
- (J) Varied habitat mosaic of woodland, meadows, native hedges and species rich lawn create habitat corridors.
- (K) Hedgehog gaps provided in fencing.
- (L) Compost heaps for bug habitat.

**KEY CONTINUED**

- [Ref. S16] Bat Box Q50/50A
- [Ref. S17] Sparrow Terrace Q50/50A
- [Ref. S18] Starling Box Q50/50A
- [Ref. S19] Hedgehog house Q50/50A
- Small gaps to be provided of at least 15cm x 15cm at designated points under all boundary fences to allow movement of small mammals / hedgehogs.
- Compost Heaps

**KEY**

- Proposed Building
- Proposed Building Overhang
- Existing Tree
- Existing Hedge
- Existing Vegetation Removed to Facilitate Development

**Trees**

- Bp Garden Tree 1 *Betula pubescens* Multistem
- Baf Garden Tree 2 *Betula albosinensis* 'Fascination' Multistem
- Qp Specimen Tree 1 *Quercus palustris*
- Pp Specimen Tree 2 *Parrotia persica*
- Ls Entrance/Car park trees *Liquidambar styraciflua*

**Planting**

- Native Hedgerow - REF NH
- Hornbeam Hedgerow - REF HH
- Green Screen 'Edge' - REF GS
- Amenity Planting & Specimens (20% of area) REF MIX A
- Courtyard Sensory REF MIX B
- Sensory Garden Area REF MIX C
- Raihgarden REF MIX D
- Play Swale & Meadow Mix REF MIX E
- Meadow Planting - REF M1 Eco Species Rich Lawn type
- Meadow Planting - REF M2 Flowering Meadow
- Amenity Lawn - REF G1 Seeding
- Amenity Lawn - REF G2 Turf
- Reinforced Grass - REF G3 (ref to General Arrangement)
- Woodland Planting - REF W1

ID	RISK	MITIGATION	DATE MITIGATED
<b>RESIDUAL PROJECT RISKS</b>			

DATE	REV	DESCRIPTION OF REVISION	DRAWN BY	APPROVED BY
09/09/2022	P07	Red Line Amended for Planning Issue		
30/08/2022	P06	Issued for Planning		

**STATUS**  
**S2 - FOR PLANNING**

**ares**  
LANDSCAPE ARCHITECTS

Ares Landscape Architects LTD  
Gatecrasher,  
51 Eyre Lane  
Sheffield  
S1 4RB  
t: 0114 276 2000  
e: hello@aresdesign.co.uk  
w: ares.eu.com

CLIENT:  
**Wates Construction Ltd**

PROJECT TITLE:  
**Ysgol Plas Brondyffryn SEN**

DRAWING TITLE:  
**Sustainability and Biodiversity**

DRAWING SCALE: NTS	DRAWN BY: KP	DRAWN DATE: 08/02/2022
PAPER SIZE: A1	APPROVED BY: KS	ALA PROJECT CODE: ALAT25

DRAWING NUMBER: **YPB-ALA-00-XX-DR-L-00029** STATUS: **S2** REVISION: **P06**