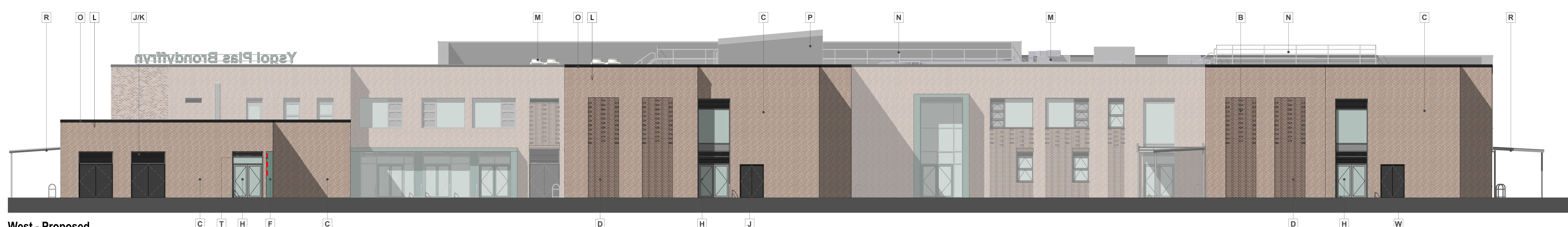


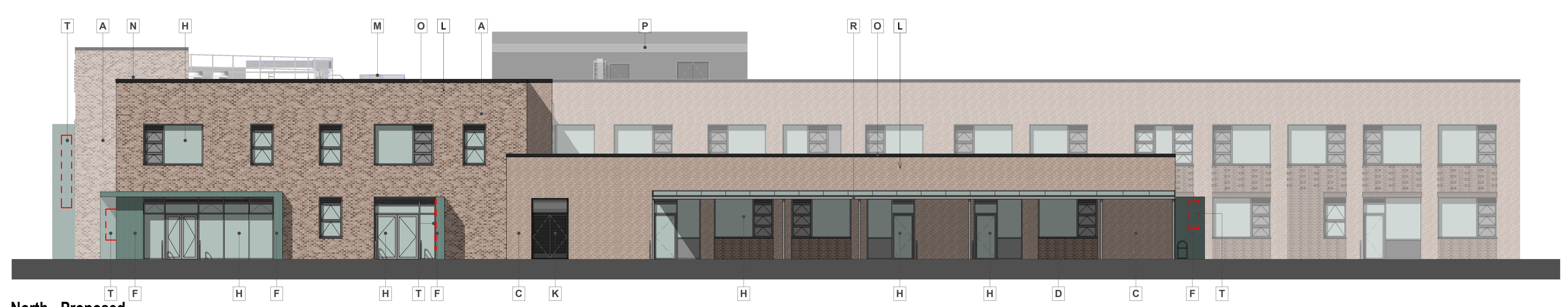
**East - Proposed**  
 1: 100



**South - Proposed**  
 1: 100

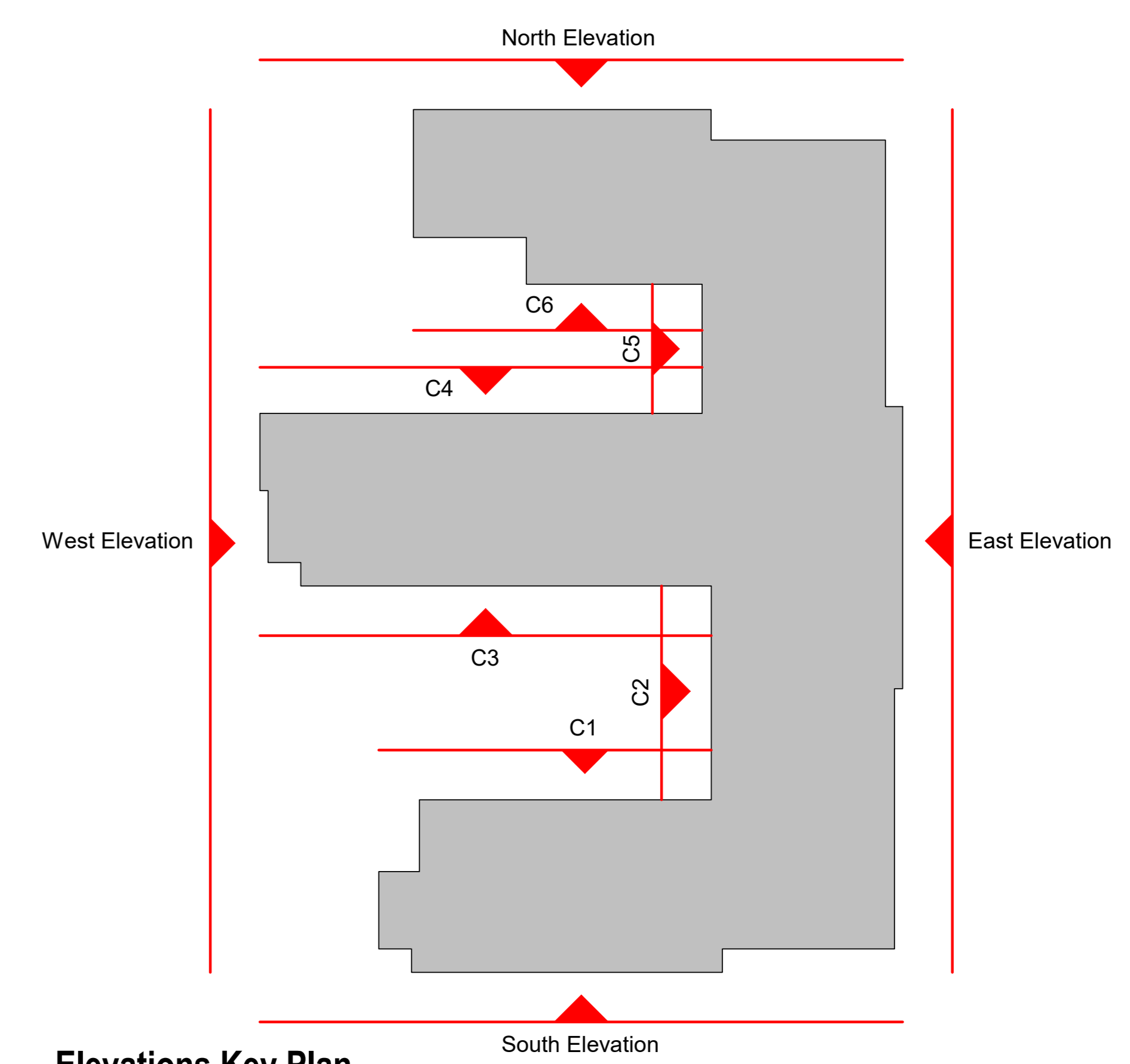


**West - Proposed**  
 1: 100



**North - Proposed**  
 1: 100

- Material Key**
- A Facing brick type 1 - light / dark dappled effect (specification TBC)
  - B Protruding feature brick detail
  - C Facing brick type 2 - light (specification TBC)
  - D Facing brick type 3 - dark (specification TBC)
  - E Standing seam metal wall cladding - (colour TBC)
  - F Fibre cement rainscreen wall cladding to entrance features and entrance soffits (colour TBC)
  - G Soffit liner: Fibre cement cladding to match item F above- (colour TBC)
  - H PPC Aluminium windows and curtain walling elements (colours TBC; incorporating mixture of clear glazing, opaque glazing and PPC metal louvres; incorporating mixture of fixed elements, opening elements and door elements; some apertures to receive feature coloured reveals & soffits, colour TBC)
  - J PPC Metal solid doors - (colour TBC)
  - K PPC Metal louvred doors - (colour TBC)
  - L Roof - Hot-melt (colour - grey)
  - M Roof mounted plant - (subject to M&E equipment height, may require louvred screening, colour TBC, refer to Roof Plan GA for zones)
  - N Roof mounted guardrail - (colour TBC)
  - O Preformed plastic parapet capping - (colour TBC)
  - P Roof access/egress enclosure of composite cladding material on walls and roof - (colour TBC)
  - Q PPC metal roof lights - refer to GA Roof Plan (colour TBC)
  - R Canopy - Steel frame / polycarbonate roof
  - S External columns - (decorative cladding material, or paint; colour TBC)
  - T Indicative signage zone (zones indicated in dashed red below)
- Refer to M&E designer drawings for locations, specification & set-out of air-bricks (PPC metal, of similar colour to brick specification)



**Elevations Key Plan**  
 1: 500