

FACE MILL ARBORS

CANELA



FEATURES

- Available in 3 clamping styles
- Suitable for indexable face mills
- All major taper types
- New anti-vibration range

BENEFITS

- Vibration reduction up to 60% with anti-vibration holders
- High quality general holders
- Excellent value

Cutwel Face Mill Arbors for General or Performance Indexable Milling

Available in standard spigot drive, 4-bolt type or combination face mill arbor.

The range includes gauge lengths up to 200mm in standard type or 500mm in the new SSSHHH! anti-vibration face mill arbors.



CONTENTS

BT MAS BT30, BT40, BT50.....P1062	HSK-F HSK50-F, HSK63-F.....P1067	QUICK CHANGE QC30, QC40.....P1070
DIN 69871 SK40, SK50.....P1064	PSC Capto Compatible PSC40/50/63/80/100.....P1068	MORSE TAPER With Thread.....P1071
HSK-A HSK50-A, HSK63-A, HSK100-A.....P1066	DOUBLE CONTACT DBT30/40/50, CBT40, DSK40/50.....P1069	R8 Bridgeport Taper.....P1071
HSK-E HSK50-E, HSK63-E.....P1067	DIN2080 ISO30, ISO40, ISO50.....P1070	

CANELA SSSHHH! ANTI-VIBRATION FACE MILL ARBOR

Special damped design reduces vibration by up to 60% in long reach milling applications.



Reducing Vibration Results In:

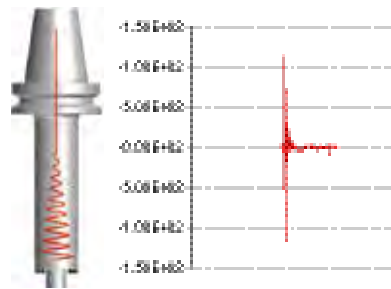
- ▶ Less noise
- ▶ Increased tool life
- ▶ Higher cutting performance (up to 3 times)
- ▶ Improved surface finish and a more stable machining process
- ▶ Reduced spindle wear

COMPARISON OF VIBRATION DAMPING TIME

CUTWEL SSSHHH! ARBOR

SHORTER VIBRATION DAMPING TIME!

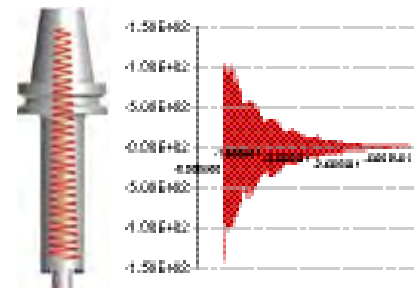
2 ~ 3 times better performance than standard arbors



STANDARD ARBOR

LONGER VIBRATION DAMPING TIME!

Chattering is caused reducing performance and tool life



GAUGE LENGTHS

Lengths	30	BT			SK		HSK-A	
		40	50	40	50	63	100	
Standard (45-80mm)	✓	✓	✓	✓	✓	✓	✓	
Long (90-115mm)	-	✓	✓	✓	✓	✓	✓	
Long (120-160mm)	-	✓	✓	✓	✓	✓	✓	
Extended (165-200mm)	-	✓	✓	✓	✓	-	-	
SSSHHH! Arbors (150-500mm)	-	✓	✓	✓	✓	✓	✓	





FACE MILL ARBORS BT MAS

General Purpose & Heavy Duty Face Mill Arbors for Indexable Face Mills

TENON DRIVE

- ▶ Balanced to G6.3 15,000RPM
- ▶ <200mm gauge length
- ▶ Tenon drive for regular face mills with spigot



P990



COMBINATION TYPE

- ▶ Balanced to G6.3 15,000RPM
- ▶ For clamping face mills & DIN841 or DIN1880 shell end mills
- ▶ Supplied with removable drive ring



P990



BALANCED 15,000RPM • G6.3

Taper	Spigot	Gauge Length	ORDER CODE	PRICE	
BT30	16	50	BT30-SMA16-50	▲	
	22	50	BT30-SMA22-50	▲	
	27	50	BT30-SMA27-50	▲	
BT40	16	60	BT40AD/B-SMA16-60	▲	
		100	BT40-H100D16F	▲	
		160	BT40-H160D16F	▲	
		200	BT40-H200D16F	▲	
	22	50	BT40AD/B-SMA22-50	▲	
		100	BT40-H100D22F	▲	
		160	BT40-H160D22F	▲	
		200	BT40-H200D22F	▲	
	27	45	BT40AD/B-SMA27-45	▲	
		100	BT40-H100D27F	▲	
		160	BT40H160D27F	▲	
		200	BT40-H200D27F	▲	
32	60	BT40AD/B-SMA32-60	▲		
	100	BT40-H100D32F	▲		
	160	BT40H160D32F	▲		
	60	BT40AD/B-SMA40-60	▲		
40	100	BT40-H100D40F	▲		
	160	BT40H160D40F	▲		
	BT50	16	60	BT50AD/B-SMA16-45	▲
			100	BT50-H100D16F	▲
160			BT50-H160D16F	▲	
200			BT50H200D16F	▲	
22	60	BT50AD/B-SMA22-60	▲		
	100	BT50-H100D22F	▲		
	160	BT50-H160D22F	▲		
	200	BT50H200D22F	▲		
27	60	BT50AD/B-SMA27-60	▲		
	100	BT50-H100D27F	▲		
	160	BT50-H160D27F	▲		
	200	BT50H200D27F	▲		
32	60	BT50AD/B-SMA32-60	▲		
	100	BT50-H100D32F	▲		
	160	BT50-H160D32F	▲		
	200	BT50H200D32F	▲		
40	60	BT50AD/B-SMA40-60	▲		
	100	BT50-H100D40F	▲		

BALANCED 15,000RPM • G6.3

Taper	Spigot	Gauge Length	ORDER CODE	PRICE
BT30	16	50	BT30-SMC16-50	▼
	22	50	BT30-SMC22-50	▼
	27	55	BT30-SMC27-55	▼
BT40	16	55	BT40-SMC16-55	▲
	22	55	BT40-SMC22-55	▲
	27	55	BT40-SMC27-55	▲
	32	60	BT40-SMC32-60	▲
BT50	40	60	BT40-SMC40-60	▲
	16	70	BT50-SMC16-70	▼
	22	70	BT50-SMC22-70	▼
	27	70	BT50-SMC27-70	▼
	32	70	BT50-SMC32-70	▼

4 BOLT TYPE

- ▶ Balanced to G6.3 12,000RPM
- ▶ For large diameter face mills
- ▶ 4 clamping bolts for extra rigidity



P990



BALANCED 12,000RPM • G6.3

Taper	Spigot	Gauge Length	ORDER CODE	PRICE
BT50	40	70	BT50-SMD40-70	▲
	60	80	BT50-SMD60-80	▲

BT MAS DOUBLE ASSEMBLY POT

- ▶ For vertical and horizontal assembly



Taper	ORDER CODE	PRICE
BT30	237-32130	▲
BT40	237-32330	▲
BT50	237-32530	▲

UNIVERSAL ADJUSTABLE ASSEMBLY POT

- ▶ Universal fixture can be used for BT, SK, HSK and ISO holders



Taper	ORDER CODE	PRICE
BT40 / SK40 / HSK63	FTTOOLBOY40	▲
BT50 / SK50 / HSK100	FTTOOLBOY50	▲

▲ UK stock - Generally x-stock for next day delivery ▼ European stock - Generally 2-3 days delivery (please check for lead times)



FACE MILL ARBORS BT MAS SSSHHH!



Anti-Vibration Damped Face Mill Arbors for Long Reach Indexable Milling Applications

ANTI-VIBRATION STRAIGHT NECK

- ▶ Straight neck design to prevent interference
- ▶ Balanced to G6.3 12,000RPM
- ▶ <500mm gauge length



G6.3 12000 BT MAS

SSSHHH!



ANTI-VIBRATION TAPER NECK

- ▶ Taper neck design increases rigidity & strength in long reach milling applications
- ▶ Balanced to G6.3 12,000RPM
- ▶ <500mm gauge length



G6.3 12000 BT MAS

SSSHHH!



BALANCED 12,000RPM • G6.3

Taper	Spigot	Neck Dia	Gauge Length	ORDER CODE	PRICE		
BT40	16	38	150	A20.160.40.16/150-38 ▲			
			200	A20.160.40.16/200-38 ▲			
			250	A20.160.40.16/250-38 ▲			
	22	48	150	A20.160.40.22/150-48 ▲			
			200	A20.160.40.22/200-48 ▲			
			250	A20.160.40.22/250-48 ▲			
	27	54	150	A20.160.40.27/150-54 ▲			
			200	A20.160.40.27/200-54 ▲			
			250	A20.160.40.27/250-54 ▲			
BT50	16	38	150	A20.160.50.16/150-38 ▲			
			200	A20.160.50.16/200-38 ▲			
			250	A20.160.50.16/250-38 ▲			
			300	A20.160.50.16/300-38 ▼			
			400	A20.160.50.16/400-38 ▲			
	22	48	200	A20.160.50.22/200-48 ▲			
			250	A20.160.50.22/250-48 ▼			
			300	A20.160.50.22/300-48 ▼			
			400	A20.160.50.22/400-48 ▼			
			500	A20.160.50.22/500-48 ▼			
	27	60	200	A20.160.50.27/200-60 ▼			
			250	A20.160.50.27/250-60 ▼			
			300	A20.160.50.27/300-60 ▼			
			400	A20.160.50.27/400-60 ▼			
			500	A20.160.50.27/500-60 ▼			
			32	76	200	A20.160.50.32/200-76 ▼	
					250	A20.160.50.32/250-76 ▼	
					300	A20.160.50.32/300-76 ▼	
400	A20.160.50.32/400-76 ▼						
500	A20.160.50.32/500-76 ▼						

BALANCED 12,000RPM • G6.3

Taper	Spigot	Neck Dia Min	Neck Dia Max	Gauge Length	ORDER CODE	PRICE	
BT40	16	38	50	150	A20.160.40.16/150 ▼		
				200	A20.160.40.16/200 ▼		
				250	A20.160.40.16/250 ▼		
	22	44	50	150	A20.160.40.22/150 ▼		
				200	A20.160.40.22/200 ▼		
				250	A20.160.40.22/250 ▼		
	BT50	16	38	80	150	A20.160.50.16/150 ▼	
					200	A20.160.50.16/200 ▼	
					250	A20.160.50.16/250 ▼	
300					A20.160.50.16/300 ▼		
400					A20.160.50.16/400 ▼		
22		48	80	200	A20.160.50.22/200 ▼		
				250	A20.160.50.22/250 ▼		
				300	A20.160.50.22/300 ▼		
				400	A20.160.50.22/400 ▼		
				500	A20.160.50.22/500 ▼		
27		60	80	200	A20.160.50.27/200 ▼		
				250	A20.160.50.27/250 ▼		
				300	A20.160.50.27/300 ▼		
				400	A20.160.50.27/400 ▼		
				500	A20.160.50.27/500 ▼		

▲ UK stock - Generally x-stock for next day delivery ▼ European stock - Generally 2-3 days delivery (please check for lead times)

CANELA SSSHHH!
ANTI-VIBRATION FACE MILL ARBOR

BENEFITS

Special damped design reduces vibration by up to 60% in long reach milling applications.

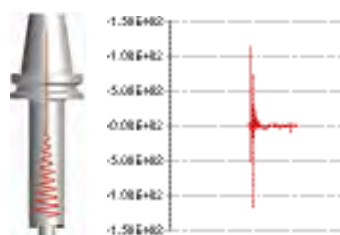
Reducing Vibration Results In:

- ▶ Less noise
- ▶ Increased tool life
- ▶ Higher cutting performance (up to 3 times)
- ▶ Improved surface finish/stable machining process
- ▶ Reduced spindle wear

COMPARISON OF VIBRATION DAMPING TIME

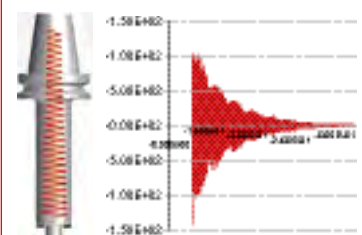
CUTWEL SSSHHH! ARBOR

SHORTER VIBRATION DAMPING TIME!
2 ~ 3 times better performance than standard arbors



STANDARD ARBOR

LONGER VIBRATION DAMPING TIME!
Chattering is caused reducing performance and tool life.





FACE MILL ARBORS DIN 69871

General Purpose & Heavy Duty Face Mill Arbors for Indexable Face Mills

TENON DRIVE

- ▶ Balanced to G6.3 15,000RPM
- ▶ <200mm gauge length
- ▶ Tenon drive for regular face mills with spigot



P990



COMBINATION TYPE

- ▶ Balanced to G6.3 15,000RPM
- ▶ For clamping face mills, DIN 841 or DIN 1880 shell end mills
- ▶ Supplied with removable drive ring



P990



BALANCED 15,000RPM • G6.3

Taper	Spigot	Gauge Length	ORDER CODE	PRICE
SK40	16	45	SK40AD/B-SMA16-35	▲
		100	SK40-H100D16F	▲
		160	SK40-H160D16F	▲
		200	SK40-H200D16F	▲
	22	45	SK40AD/B-SMA22-60	▲
		100	SK40-H100D22F	▲
		160	SK40-H160D22F	▲
		200	SK40-H200D22F	▲
	27	45	SK40AD/B-SMA27-40	▲
		100	SK40-H100D27F	▲
		160	SK40-H160D27F	▲
	32	50	SK40AD/B-SMA32-50	▲
100			SK40-H100D32F	▲
100		SK40-H160D32F	▲	
		160	SK40-H160D32F	▲
40	50	SK40AD/B-SMA40-60	▲	
		100	SK40-H100D40F	▲
	100	SK40-H160D40F	▲	
		160	SK40-H160D40F	▲
SK50	16	60	SK50AD/B-SMA16-45	▲
		100	SK50-H100D16F	▲
		160	SK50-H160D16F	▲
		200	SK50-H200D16F	▲
	22	60	SK50AD/B-SMA22-60	▲
		100	SK50-H100D22F	▲
		160	SK50-H160D22F	▲
		200	SK50-H200D22F	▲
	27	60	SK50AD/B-SMA27-60	▲
		100	SK50-H100D27F	▲
		160	SK50-H160D27F	▲
		200	SK50-H200D27F	▲
	32	60	SK50AD/B-SMA32-60	▲
			100	SK50-H100D32F
		100	SK50-H160D32F	▲
			160	SK50-H160D32F
40	60	SK50AD/B-SMA40-60	▲	
		100	SK50-H100D40F	▲
	100	SK50-H160D40F	▲	
		160	SK50-H160D40F	▲

BALANCED 15,000RPM • G6.3

Taper	Spigot	Gauge Length	ORDER CODE	PRICE
SK40	16	55	SK40-SMC-16-55	▼
		22	SK40-SMC-22-55	▲
		27	SK40-SMC-27-55	▼
		32	SK40-SMC-32-60	▼
		40	SK40-SMC-40-60	▼
SK50	16	55	SK50-SMC-16-55	▼
		22	SK50-SMC-22-55	▼
		27	SK50-SMC-27-55	▼
		32	SK50-SMC-32-55	▼
40	70	SK50-SMC-40-55	▼	

4 BOLT TYPE

- ▶ Balanced to G6.3 12,000RPM
- ▶ For large diameter face mills
- ▶ 4 clamping bolts for extra rigidity



P990



BALANCED 12,000RPM • G6.3

Taper	Spigot	Gauge Length	ORDER CODE	PRICE
SK50	40	70	SK50-SMD40-70	▼
	60	70	SK50-SMD60-70	▼

DOUBLE ASSEMBLY POT DIN 69871

- ▶ For vertical and horizontal assembly



Taper	ORDER CODE	PRICE
SK40	237-32320	▲
SK50	237-32520	▲

UNIVERSAL ADJUSTABLE ASSEMBLY POT

- ▶ Universal fixture can be used for BT, SK, HSK and ISO holders



Taper	ORDER CODE	PRICE
BT40 / SK40 / HSK63	FTTOOLBOY40	▲
BT50 / SK50 / HSK100	FTTOOLBOY50	▲

▲ UK stock - Generally x-stock for next day delivery ▼ European stock - Generally 2-3 days delivery (please check for lead times)



FACE MILL ARBORS DIN 69871 SSSHHH!

Anti-Vibration Damped Face Mill Arbors for Long Reach Indexable Milling Applications



ANTI-VIBRATION STRAIGHT NECK

- ▶ Straight neck design to prevent interference
- ▶ Balanced to G6.3 12,000RPM
- ▶ ≤500mm gauge length



G6.3 12000
DIN 69871

SSSHHH!



ANTI-VIBRATION TAPER NECK

- ▶ Taper neck design increases rigidity & strength in long reach milling applications
- ▶ Balanced to G6.3 12,000RPM
- ▶ ≤500mm gauge length



G6.3 12000
DIN 69871

SSSHHH!



BALANCED 12,000RPM • G6.3

Taper	Spigot	Neck Dia	Gauge Length	ORDER CODE	PRICE
SK40	16	38	150	A11.160.40.16/150-38	▼
			200	A11.160.40.16/200-38	▼
			250	A11.160.40.16/250-38	▼
	22	48	150	A11.160.40.22/150-48	▼
			200	A11.160.40.22/200-48	▼
			250	A11.160.40.22/250-48	▼
	27	54	150	A11.160.40.27/150-54	▼
			200	A11.160.40.27/200-54	▼
			250	A11.160.40.27/250-54	▼
SK50	16	38	150	A11.160.50.16/150-38	▼
			200	A11.160.50.16/200-38	▼
			250	A11.160.50.16/250-38	▼
			300	A11.160.50.16/300-38	▼
			400	A11.160.50.16/400-38	▼
	22	48	200	A11.160.50.22/200-48	▼
			250	A11.160.50.22/250-48	▼
			300	A11.160.50.22/300-48	▼
			400	A11.160.50.22/400-48	▼
			500	A11.160.50.22/500-48	▼
	27	60	200	A11.160.50.27/200-60	▼
			250	A11.160.50.27/250-60	▼
			300	A11.160.50.27/300-60	▼
			400	A11.160.50.27/400-60	▼
			500	A11.160.50.27/500-60	▼
32	76	200	A11.160.50.32/200-76	▼	
		250	A11.160.50.32/250-76	▼	
		300	A11.160.50.32/300-76	▼	
		400	A11.160.50.32/400-76	▼	
		500	A11.160.50.32/500-76	▼	

BALANCED 12,000RPM • G6.3

Taper	Spigot	Neck Dia Min.	Neck Dia Max.	Gauge Length	ORDER CODE	PRICE
SK40	16	38	50	150	A11.160.40.16/150	▼
				200	A11.160.40.16/200	▼
				250	A11.160.40.16/250	▼
	22	44	50	150	A11.160.40.22/150	▼
				200	A11.160.40.22/200	▼
				250	A11.160.40.22/250	▼
SK50	16	38	80	150	A11.160.50.16/150	▼
				200	A11.160.50.16/200	▼
				250	A11.160.50.16/250	▼
				300	A11.160.50.16/300	▼
	22	48	80	200	A11.160.50.22/200	▼
				250	A11.160.50.22/250	▼
				300	A11.160.50.22/300	▼
				400	A11.160.50.22/400	▼
				500	A11.160.50.22/500	▼
	27	60	80	200	A11.160.50.27/200	▼
				250	A11.160.50.27/250	▼
				300	A11.160.50.27/300	▼
27	60	80	400	A11.160.50.27/400	▼	
			500	A11.160.50.27/500	▼	

▲ UK stock - Generally x-stock for next day delivery ▼ European stock - Generally 2-3 days delivery (please check for lead times)

CANELA SSSHHH!
ANTI-VIBRATION FACE MILL ARBOR

BENEFITS

Special damped design reduces vibration by up to 60% in long reach milling applications.

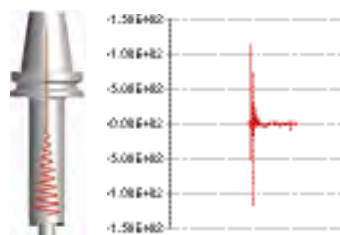
Reducing Vibration Results In:

- ▶ Less noise
- ▶ Increased tool life
- ▶ Higher cutting performance (up to 3 times)
- ▶ Improved surface finish/stable machining process
- ▶ Reduced spindle wear

COMPARISON OF VIBRATION DAMPING TIME

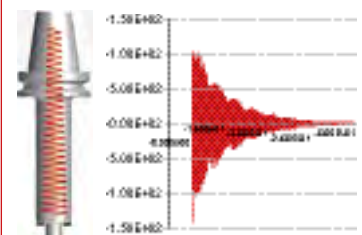
CUTWEL SSSHHH! ARBOR

SHORTER VIBRATION DAMPING TIME!
2 ~ 3 times better performance than standard arbors



STANDARD ARBOR

LONGER VIBRATION DAMPING TIME!
Chattering is caused reducing performance and tool life.





FACE MILL ARBORS HSK-A

General Purpose & Heavy Duty Face Mill Arbors For Indexable Face Mills

TENON DRIVE

- ▶ Balanced to G6.3 15,000RPM
- ▶ <200mm gauge length
- ▶ Tenon drive for regular face mills with spigot



COMBINATION TYPE

- ▶ Balanced to G6.3 15,000RPM
- ▶ For clamping face mills, DIN 841 or DIN 1880 shell end mills
- ▶ Supplied with removable drive ring



BALANCED 15,000RPM • G6.3

Taper	Spigot	Gauge Length	ORDER CODE	PRICE
HSK50A	16	50	HSK50-SMA16-50A ▲	
	22	60	HSK50-SMA22-60A ▲	
	27	60	HSK50-SMA27-60A ▲	
	32	60	HSK50-SMA32-60A ▲	
	40	70	HSK50-SMA40-70A ▼	
HSK63A	16	50	HSK63-SMA16-50A ▲	
		100	HSK63-SMA16-100A ▲	
		160	HSK63-SMA16-160A ▲	
	22	50	HSK63-SMA22-50A ▲	
		100	HSK63-SMA22-100A ▲	
		160	HSK63-SMA22-160A ▲	
	27	60	HSK63-SMA27-60A ▲	
		100	HSK63-SMA27-100A ▲	
		160	HSK63-SMA27-160A ▲	
32	60	HSK63-SMA32-60A ▲		
	100	HSK63-SMA32-100A ▲		
	160	HSK63-SMA32-160A ▲		
40	70	HSK63-SMA40-70A ▲		
	100	HSK63-SMA40-100A ▼		
	160	HSK63-SMA40-160A ▼		
HSK100A	16	50	HSK100-SMA16-50A ▲	
		100	HSK100-SMA16-100A ▲	
		160	HSK100-SMA16-160A ▼	
	22	50	HSK100-SMA22-50A ▲	
		100	HSK100-SMA22-100A ▲	
		160	HSK100-SMA22-160A ▲	
	27	50	HSK100-SMA27-60A ▲	
		100	HSK100-SMA27-100A ▲	
		160	HSK100-SMA27-160A ▲	
	32	50	HSK100-SMA32-50A ▲	
		100	HSK100-SMA32-100A ▲	
		160	HSK100-SMA32-160A ▲	
	40	60	HSK100-SMA40-60A ▼	
		100	HSK100-SMA40-100A ▼	
		160	HSK100-SMA40-160A ▼	

BALANCED 15,000RPM • G6.3

Taper	Spigot	Gauge Length	ORDER CODE	PRICE
HSK63A	16	60	HSK63AH60D16C ▼	
	22	60	HSK63AH60D22C ▼	
	27	60	HSK63AH60D27C ▼	
	32	65	HSK63AH65D32C ▼	
	40	70	HSK63AH70D40C ▼	

ANTI-VIBRATION STRAIGHT NECK

- ▶ Straight neck design to prevent interference
- ▶ Balanced to G6.3 12,000RPM
- ▶ <300mm gauge length



SSSHHH!

CANELA

BALANCED 12,000RPM • G6.3

Taper	Spigot	Neck Dia	Gauge Length	ORDER CODE	PRICE
HSK63	16	38	200	A16.160.63.16/200-38 ▼	
			300	A16.160.63.16/300-38 ▼	
			400	A16.160.63.22/200-48 ▼	
	27	58	200	A16.160.63.27/200-58 ▼	
			300	A16.160.63.27/300-58 ▼	
			400	A16.160.63.27/400-58 ▼	
HSK100	16	38	200	A16.160.100.16/200-3 ▼	
			300	A16.160.100.16/300-3 ▼	
			400	A16.160.100.22/200-4 ▼	
	27	58	200	A16.160.100.27/200-5 ▼	
			300	A16.160.100.27/300-5 ▼	
			400	A16.160.100.27/400-5 ▼	
32	78	300	A16.160.100.32/300-7 ▼		
		400	A16.160.100.32/400-7 ▼		
		500	A16.160.100.32/500-7 ▼		

COOLANT TUBES & KEYS HSK-A

- ▶ For through coolant supply on HSK tool holders (sold separately)



	HSK50-A	HSK63-A	HSK100-A
COOLANT TUBE	950APR01	963APR01	910APR01
COOLANT TUBE KEY	950CHVAR	963CHVAR	910CHVAR

DOUBLE ASSEMBLY POT HSK-A

- ▶ For vertical and horizontal assembly



Taper	ORDER CODE	PRICE
HSK50A	237-32350 ▲	
HSK63A	237-32450 ▲	
HSK100A	237-32650 ▲	

▲ UK stock - Generally x-stock for next day delivery ▼ European stock - Generally 2-3 days delivery (please check for lead times)





FACE MILL ARBORS HSK-E & HSK-F

Anti-Vibration Damped Face Mill Arbors for Long Reach Indexable Milling Applications

TENON DRIVE HSK-E

- ▶ Balanced to G2.5 20,000RPM
- ▶ Tenon drive for regular face mills with spigot



TENON DRIVE HSK-F

- ▶ Balanced to G2.5 20,000RPM
- ▶ Tenon drive for regular face mills with spigot



BALANCED 20,000RPM • G2.5

Taper	Spigot	Gauge Length	ORDER CODE	PRICE
HSK50-E	16	50	HSK50-SMA16-50E ▼	
	22	60	HSK50-SMA22-60E ▼	
	27	60	HSK50-SMA27-60E ▼	
	32	60	HSK50-SMA32-60E ▼	
	40	70	HSK50-SMA40-70E ▼	
HSK63-E	16	50	HSK63-SMA16-50E ▼	
		100	HSK63-SMA16-100E ▼	
		160	HSK63-SMA16-160E ▼	
	22	50	HSK63-SMA22-50E ▼	
		100	HSK63-SMA22-100E ▲	
		160	HSK63-SMA22-160E ▼	
	27	60	HSK63-SMA27-60E ▼	
		100	HSK63-SMA27-100E ▼	
		160	HSK63-SMA27-160E ▼	
	32	60	HSK63-SMA32-60E ▼	
		100	HSK63-SMA32-100E ▼	
		160	HSK63-SMA32-160E ▼	
40	70	HSK63-SMA40-70E ▼		
	100	HSK63-SMA40-100E ▼		
	160	HSK63-SMA40-160E ▼		

BALANCED 20,000RPM • G2.5

Taper	Spigot	Gauge Length	ORDER CODE	PRICE
HSK50-F	16	50	HSK50-SMA16-50F ▼	
	22	60	HSK50-SMA22-60F ▼	
	27	60	HSK50-SMA27-60F ▼	
	32	60	HSK50-SMA32-60F ▼	
	40	70	HSK50-SMA40-70F ▼	
HSK63-F	16	50	HSK63-SMA16-50F ▲	
		100	HSK63-SMA16-100F ▲	
		160	HSK63-SMA16-160F ▼	
	22	50	HSK63-SMA22-50F ▲	
		100	HSK63-SMA22-100F ▲	
		160	HSK63-SMA22-160F ▲	
	27	60	HSK63-SMA27-60F ▲	
		100	HSK63-SMA27-100F ▲	
		160	HSK63-SMA27-160F ▲	
	32	60	HSK63-SMA32-60F ▲	
		100	HSK63-SMA32-100F ▲	
		160	HSK63-SMA32-160F ▲	
40	70	HSK63-SMA40-70F ▼		
	100	HSK63-SMA40-100F ▼		
	160	HSK63-SMA40-160F ▼		

COOLANT TUBES & KEYS HSK-E & HSK-F

- ▶ For through coolant supply on HSK tool holders (sold separately)



	HSK40-E	HSK50-E	HSK63-E	HSK50-F	HSK63-F
COOLANT TUBE	950APR02	950APR01	963APR01	950APR02	950APR01
COOLANT TUBE KEY	816-204022	950CHVAR	963CHVAR	816-204022	950CHVAR

DOUBLE ASSEMBLY POT HSK-E & HSK-F

- ▶ For vertical and horizontal assembly



Taper	ORDER CODE	PRICE
HSK40E	237-32270 ▲	
HSK50E	237-32370 ▼	
HSK63E	237-32470 ▲	
HSK50F	237-32370 ▼	
HSK63F	237-32470 ▲	

▲ UK stock - Generally x-stock for next day delivery ▼ European stock - Generally 2-3 days delivery (please check for lead times)





FACE MILL ARBORS PSC POLYGON SHANK

High Quality Face Mill Arbors for General Machining

TENON DRIVE PSC

- ▶ Compatible with Capto turrets
- ▶ Tenon drive for regular face mills with spigot

CAPTO
COMPATIBLE



COMBINATION TYPE PSC

- ▶ Compatible with Capto turrets
- ▶ Supplied with removable drive ring

CAPTO
COMPATIBLE



CAPTO COMPATIBLE

Taper	Spigot	Gauge Length	ORDER CODE	PRICE
PSC40	16	55	18.160.040.16 ▼	
	22		18.160.040.22 ▼	
PSC50	16	60	18.160.050.16 ▼	
	22		18.160.050.22 ▼	
	27		18.160.050.27 ▼	
	32		18.160.050.32 ▼	
PSC63	16	63	18.160.063.16 ▼	
	22	25	18.160.063.22 ▼	▲
		100	18.160.063.22/100 ▲	
	27	25	18.160.063.27 ▼	▲
		100	18.160.063.27/100 ▲	
	32	25	18.160.063.32 ▼	▲
		100	18.160.063.32/100 ▲	
	40	40	18.160.063.40 ▼	
100		18.160.063.40/100 ▼		
PSC80	16	50	18.160.080.16 ▼	
	22	30	18.160.080.22 ▼	
		100	18.160.080.22/100 ▼	
	27	30	18.160.080.27 ▼	
		100	18.160.080.27/100 ▼	
	32	30	18.160.080.32 ▼	
		100	18.160.080.32/100 ▼	
	40	30	18.160.080.40 ▼	
100		18.160.080.40/100 ▼		
PSC100	16	50	18.160.100.16 ▼	
	22	50	18.160.100.22 ▼	
		100	18.160.100.22/100 ▼	
	27	50	18.160.100.27 ▼	
		100	18.160.100.27/100 ▼	
	32	50	18.160.100.32 ▼	
		100	18.160.100.32/100 ▼	
	40	50	18.160.100.40 ▼	
100		18.160.100.40/100 ▼		
60	70	18.160.100.60 ▼		

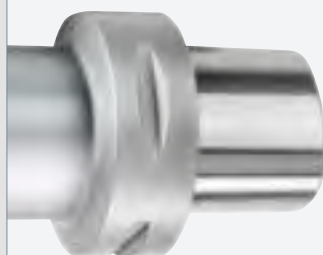
CAPTO COMPATIBLE

Taper	Spigot	Gauge Length	ORDER CODE	PRICE
PSC40	16	50	18.180.040.16 ▼	
	22		18.180.040.22 ▼	
PSC50	16	50	18.180.050.16 ▼	
	22	50	18.180.050.22 ▼	
	27	50	18.180.050.27 ▼	
	32	60	18.180.050.32 ▼	
PSC63	16	90	18.180.063.16 ▼	
	22		18.180.063.22 ▼	
	27		18.180.063.27 ▼	
	32		18.180.063.32 ▼	
PSC80	16	100	18.180.080.16 ▼	
	22		18.180.080.22 ▼	
	27		18.180.080.27 ▼	
	32		18.180.080.32 ▼	
PSC100	16	100	18.180.100.16 ▼	
	22		18.180.100.22 ▼	
	27		18.180.100.27 ▼	
	32		18.180.100.32 ▼	
PSC100	40	100	18.180.100.40 ▼	
	50		18.180.100.50 ▼	

▲ UK stock - Generally x-stock for next day delivery ▼ European stock - Generally 2-3 days delivery (please check for lead times)

FULL RANGE OF PSC TAPER HOLDERS & ADAPTERS AT CUTWEL.CO.UK

- ▶ Milling, drilling & tapping holders
- ▶ Turning holders
- ▶ Adapters & extensions



Turning Tools & Boring Bars



Test Bars



Blanks



Boring Bar Holders



Turning Tool Holders



PSC to PSC



HSK to PSC



BT/SK to PSC



Cylindrical to PSC



Square to PSC





FACE MILL ARBORS DOUBLE CONTACT, DBT, DSK & CBT

High Quality Face Mill Arbors for General Machining

TENON DRIVE DBT

- ▶ Balanced to G2.5 25,000RPM
- ▶ Tenon drive for regular face mills with spigot
- ▶ BT MAS Double Contact

DOUBLE CONTACT



BALANCED 25,000RPM • G2.5

Taper	Spigot	Gauge Length	ORDER CODE	PRICE
DBT30	16	35	DBT30-SMA16-35 ▼	
	22	45	DBT30-SMA22-45 ▼	
	27	45	DBT30-SMA27-45 ▼	
DBT40	16	45	DBT40-SMA16-45 ▲	
	22	45	DBT40-SMA22-45 ▲	
		60	DBT40-SMA22-60 ▲	
	27	45	DBT40-SMA27-45 ▼	
		60	DBT40-SMA27-60 ▼	
DBT50	16		DBT50-SMA16-60 ▼	
	22	60	DBT50-SMA22-60 ▼	
	27		DBT50-SMA27-60 ▼	

TENON DRIVE DSK

- ▶ Balanced to G2.5 25,000RPM
- ▶ Tenon drive for regular face mills with spigot
- ▶ DIN 69871 Double Contact

DOUBLE CONTACT



BALANCED 25,000RPM • G2.5

Taper	Spigot	Gauge Length	ORDER CODE	PRICE
DSK40	16	35	DSK40-SMA16-35 ▼	
	22	35	DSK40-SMA22-35 ▼	
	27	60	DSK40-SMA27-60 ▼	
DSK50	16	45	DSK50-SMA16-45 ▼	
	22	45	DSK50-SMA22-45 ▼	
	27	60	DSK50-SMA27-60 ▼	

TENON DRIVE CBT

- ▶ Balanced to G2.5 25,000RPM
- ▶ Tenon drive for regular face mills with spigot
- ▶ BT MAS Double Contact

DOUBLE CONTACT



BALANCED 25,000RPM • G2.5

Taper	Spigot	Gauge Length	ORDER CODE	PRICE
CBT40	16	60	CBT40-SMA16-60 ▲	
		120	CBT40-SMA16-120 ▲	
	22	60	CBT40-SMA22-60 ▲	
		120	CBT40-SMA22-120 ▲	
	27	60	CBT40-SMA27-60 ▲	
		120	CBT40-SMA27-120 ▲	
32	60	CBT40-SMA32-60 ▲		
	120	CBT40-SMA32-120 ▲		
40	60	CBT40-SMA40-60 ▲		

DOUBLE ASSEMBLY POT DBT, CBT & DSK

- ▶ For vertical and horizontal assembly



Taper	ORDER CODE	PRICE
DBT30 / BT30	237-32130 ▲	
DBT40 / BT40	237-32330 ▲	
DBT50 / BT50	237-32530 ▲	
DSK40 / SK40	237-32320 ▲	
DSK50 / SK50	237-32520 ▲	

▲ UK stock - Generally x-stock for next day delivery ▼ European stock - Generally 2-3 days delivery (please check for lead times)



NEED INFORMATION OR ADVICE ON ANY OF OUR PRODUCTS
CALL TECHNICAL DIRECT ON 01924 869 615





FACE MILL ARBORS DIN 2080 & QUICK CHANGE

High Quality Face Mill Arbors for General Machining

TENON DRIVE

- ▶ Balanced to G6.3 15,000RPM
- ▶ For metric draw bars



TENON DRIVE QUICK CHANGE

- ▶ Balanced to G6.3 8,000RPM
- ▶ Quick change 30 and 40 taper
- ▶ Compatible with Bristol Erickson quick change tooling system



BALANCED 8,000RPM • G6.3

Taper	Spigot	Gauge Length	ORDER CODE	PRICE
ISO30	16	35	ISO30-SMA16-35 ▲	
	22		ISO30-SMA22-35 ▲	
	27		ISO30-SMA27-35 ▲	
ISO40	16	45	ISO40-SMA16-45 ▲	
	22		ISO40-SMA22-45 ▲	
	27		ISO40-SMA27-45 ▲	
	32		ISO40-SMA32-45 ▲	
	40		ISO40-SMA40-45 ▲	
ISO50	22	45	ISO50-H45D22F ▲	
	27		ISO50-H45D27F ▲	
	32	50	ISO50-H50D32F ▲	
	40		ISO50-H50D40F ▲	

BALANCED 8,000RPM • G6.3

Taper	Spigot	Gauge Length	ORDER CODE	PRICE
QC30	16	45	ISO30-SMA16-45QC ▲	
	22		ISO30-SMA22-45QC ▲	
	27		ISO30-SMA27-45QC ▲	
QC40	16	50	ISO40-SMA16-50QC ▲	
	22		ISO40-SMA22-50QC ▲	
	27		ISO40-SMA27-50QC ▲	
	32		ISO40-SMA32-50QC ▼	

UNIVERSAL ADJUSTABLE ASSEMBLY POT

- ▶ Universal fixture can be used for BT, SK, HSK and ISO holders



Taper	ORDER CODE	PRICE
BT40 / SK40 / HSK63	FTTOOLBOY40 ▲	
BT50 / SK50 / HSK100	FTTOOLBOY50 ▲	

DOUBLE ASSEMBLY POT DIN 2080

- ▶ For vertical and horizontal assembly



Taper	ORDER CODE	PRICE
ISO30 DIN2080	237-32110 ▲	
ISO40 DIN2080	237-32310 ▲	
ISO50 DIN2080	237-32510 ▼	

TOOL TROLLEYS

- ▶ Compact or heavy duty options
- ▶ Supplied with 6 sets of tool carriers
- ▶ 10 year guarantee
- ▶ Optional shelf for the heavy duty trolley



Compact Trolley



Heavy Duty Trolley



TAPER	No. Tool Pots	ORDER CODE	PRICE
COMPACT TROLLEY			
ISO/SK/BT 40	36	CPTROLLEY-ISO40 ▼	
ISO/SK/BT 50	30	CPTROLLEY-ISO50 ▼	
HSK 63A	36	CPTROLLEY-HSK63 ▼	
HSK 100A	30	CPTROLLEY-HSK100 ▼	
Capto C6	36	CPTROLLEY-C6 ▼	
HEAVY DUTY TROLLEY			
ISO/SK/BT 40	36	HDTROLLEY-ISO40 ▼	
ISO/SK/BT 50	30	HDTROLLEY-ISO50 ▼	
HSK 63A	36	HDTROLLEY-HSK63 ▼	
HSK 100A	30	HDTROLLEY-HSK100 ▼	
Capto C6	36	HDTROLLEY-C6 ▼	
End Shelf	-	12102084.16 ▼	

▲ UK stock - Generally x-stock for next day delivery ▼ European stock - Generally 2-3 days delivery (please check for lead times)





FACE MILL ARBORS MORSE TAPER & R8

High Quality Face Mill Arbors for General Machining

MORSE TAPER COMBINATION

- ▶ With thread
- ▶ Supplied with removable drive ring



Taper	Spigot	Gauge Length	ORDER CODE	PRICE
MT3	16	37	CM3H37D16C ▲	
	22	42	CM3H42D22C ▲	
	27	42	CM3H42D27C ▲	
	32	63	CM3H63D32C ▲	
MT4	16	55	CM4H55D16C ▲	
	22		CM4H55D22C ▲	
	27		CM4H55D27C ▲	
	32		CM4H55D32C ▲	

TENON DRIVE R8

- ▶ For Bridgeport / conventional milling machines



Taper	Spigot	Gauge Length	ORDER CODE	PRICE
R8	16	19	R8H19D16F ▲	
	22	23	R8H23D22F ▲	
	27	23	R8H23D27F ▲	
	32	24	R8H24D32F ▲	

▲ UK stock - Generally x-stock for next day delivery ▼ European stock - Generally 2-3 days delivery (please check for lead times)

www.cutwel.co.uk is one of the fastest & easiest ways to purchase any of our products. With up to date stock levels & prices it is an excellent platform to progress any orders you have or to put together a quotation before ordering.



ON ORDERS OVER £75 PLACED BEFORE 6PM

call **01924 869610** or visit www.cutwel.co.uk today



*Exclusions apply.

