



TOP TIPS



PREPARE IN ADVANCE

You have an opportunity here to find out heaps of information about a range of jobs and careers.

Take a bit of time to look through the resources available and plan how to get the most out of the virtual festival.



TIME MANAGEMENT

Day 1 starts at 11am, following that, the days begin at 10am.

Check in, say hi and find out what challenges & opportunities you have in store each day!



TAKE PLENTY OF BREAKS


The Festival is designed to be spread over 4 days with between 1 - 3 hours focused time a day.

Give yourself lots of short breaks and don't sit on your computer for more than an hour at a time.

QUIZ & CHALLENGES

Throughout the Festival there will be quizzes and challenges to take part in. You could even WIN Work Experience


Of course, prizes will be available so you need to be in it, to win it!



KEEP CHATTING

Many of the festival activities involve communicating through the **Learn Live** chat room.


Keep asking questions and if they are not answered live then we will reply at the end of the festival



MOTIVATION & RESILIENCE

You will have shown great motivation & resilience during lockdown by developing new ways of learning - Well done!

Keep that going by being motivated to find out more and ask lots of questions



LEARN LIVE

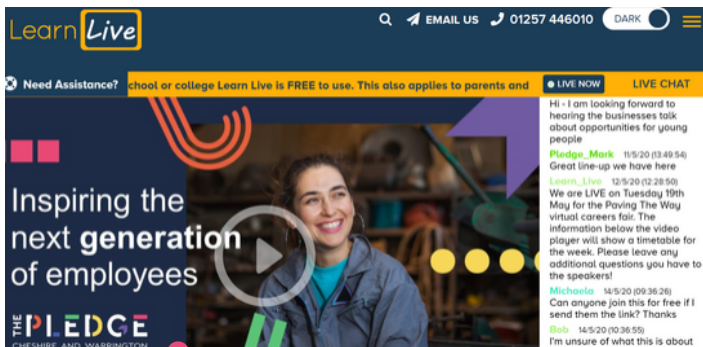


Learn Live are our Festival partners and we are delighted to be using their platform to bring you over 80 broadcasts from employers, colleges, universities and apprenticeship providers from across Cheshire & Warrington.

HOW TO REGISTER

Please visit

www.learnliveuk.com/paving-the-way-virtual-careers-festival/



Teacher Student Parent Business

*Name
*Email
Phone
*Name of school/college
*Post Code

ABOUT LEARN LIVE

Learn Live seeks to inspire the next generation through engaging and interactive live broadcasts direct into the classroom. They have worked successfully with companies like The BBC, Balfour Beatty, Gatwick Airport, National Apprenticeship Service, Lancashire LEP, Network Rail, IBM, Health Education England and The NHS since 2015 to deliver careers advice, recruitment opportunities and health awareness broadcasts into schools and colleges across the UK.

The Learn Live technology is free to schools and colleges and doesn't require any additional equipment to be purchased or procured to interact with the live broadcasts. All broadcasts can be viewed via interactive whiteboards or projectors using IE or Google Chrome browsers on existing laptops, PCs or via an app on tablet devices.

Since 2015, Learn Live have delivered over 350 live broadcasts and reached over 400,000 young people in schools, colleges and other educational institutions including Job Centre Plus. Over 2,000 schools and colleges have also engaged with the on demand video content with live interactive chat.



DAY IN THE LIFE



In this section you will find descriptions, photos and logos of each of the business owners or employers that you meet on Learn Live. They are in sector order so you may like to print a few of the pages that are of interest to you and make some extra notes.

Over days 1 & 2 of the festival, different industry sector videos will be broadcast each hour.

Most of the **Day in the Life** videos are less than FIVE minutes long and you are asked to watch between 6 - 8 of them today and the same tomorrow.

TIP
Watch the video's carefully, there may be some quiz questions about them during the Festival!

TUESDAY

- 11am Construction & Engineering
- 12pm Health & Social Care
- 1pm Creative & Media
- 2pm Agriculture & Food Production



WEDNESDAY

- 10am Uniformed Services & Third Sector
- 11am Digital & Technology
- 12pm Finance & Law
- 1pm Science
- 2pm Self-Employment



WHO WILL YOU MEET TODAY?

TUESDAY 19 MAY

Click the Company name to go to their website

@tags are their chat room names

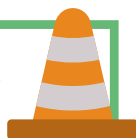
12 - 1PM

HEALTH & SOCIAL CARE

- East Cheshire NHS Trust @NHS_Elaine
- Dr Helena Crook @GP_Helena
- Bridgewater Healthcare @Bridgewater
- In Safe Hands @SafeHands_Lynn
- Right Home Senior Care @SeniorCare_Ben
- NHS Midwife n/a
- Dr Kieran Mullan @Dr_Kieran

11-12PM

CONSTRUCTION & ENGINEERING



- KIER Construction @Kier_Lara
- AJM Gleave Fencing @AJM_Haydn
- Balfour Beatty @Rachael_BalfourBeatty
- Network Rail @Sarah_NetworkRail
- Rolls-Royce Distributed Generation Systems @RollsRoyce
- Siemens @Siemens_Sian
- Bilfinger @Bilfinger

2 - 3PM

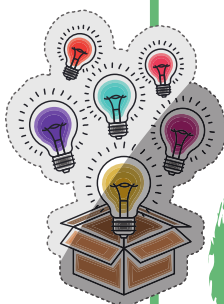
AGRICULTURE & ANIMALS



- Ivygrove Holsteins @Sam_Ivygrove
- Dave Nicholas Solutions @DaveNicols
- Zoo2U @Zoo_Melissa
- Dairy Manager @Farming_Olivia
- Chestnut Meats @Chestnut_Marnie
- Registered Veterinary Nurse @Vet_Abby
- AJM Gleave Fencing @AJM_Haydn

1 - 2PM CREATIVE & MEDIA

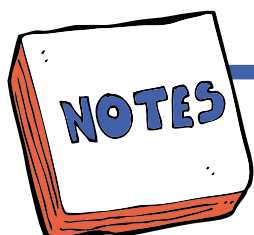
- Unieed Creative Ltd @Unieed_Joe
- JG Creative @Jo_JGCreative
- Marketing Cheshire
 - @MarketingCheshire_Nicola
- Minerva Arts @Minerva_Steph
- Arena Studio @Arena_Studio
- West Cheshire Museums
 - @Heritage_Richard
- BBC Radio 1 @SamGrapeBBC
- BBC News
- StokeonTrentLive @Stoke_Matt
- Perris-Myatt @PerrisMyatt_Merryn
- RedShift Online @RedShift_Karen



Watch between 6-8 videos today and be sure to pick at least two that you have never heard of before!
@tag the name of the person you would like to ask a question to & they will reply asap.

MY FESTIVAL JOURNEY

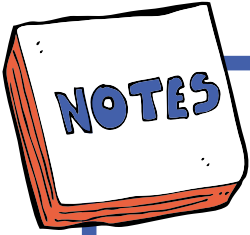
END OF DAY ONE (TUESDAY)



Industry sectors, companies or people that interest me

MY FESTIVAL JOURNEY

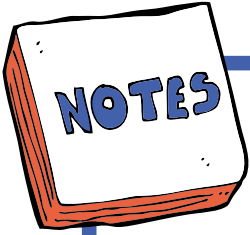
END OF DAY TWO (WEDNESDAY)



Industry sectors, companies or people that interest me

MY FESTIVAL JOURNEY

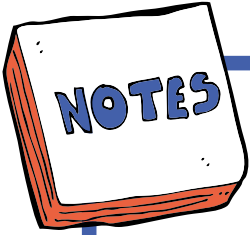
END OF DAY THREE (THURSDAY)



Industry sectors, companies or people that interest me

MY FESTIVAL JOURNEY

END OF DAY FOUR (FRIDAY)



Industry sectors, companies or people that interest me